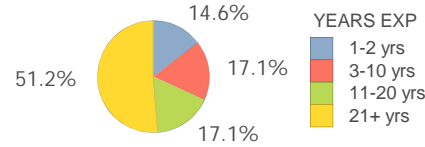


# Belle Hall Elem

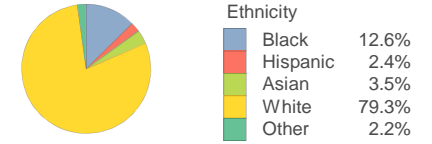
## SCHOOL DEMOGRAPHICS

Total 2016-17 Enrollment 721	Poverty Index 18.2	Gifted Academic 39.9%	% Arts Participation/Enrollment 99.0%	
Student Retentions 0.6%	% Overage by 1 or more years 7.2%	% English Lang. Learner 5.0%	% Special Education 8.9%	% Plan 504 1.8%

## Teacher Experience

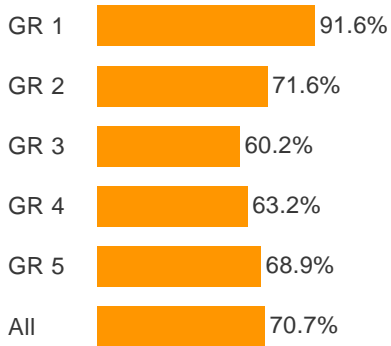


## Student Ethnicity



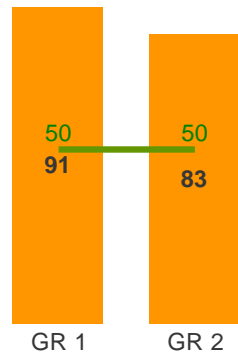
## Percent of Students Meeting or Exceeding 1.0 Year Growth

### MAP Reading 2016-17

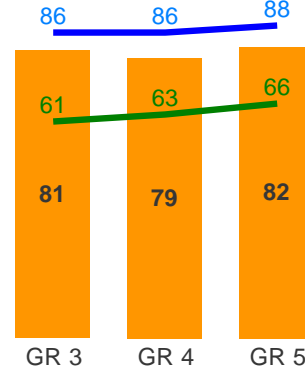


## MAP Spring 2017 Median Student Percentile Rank

### 1-2 Reading Proficiency

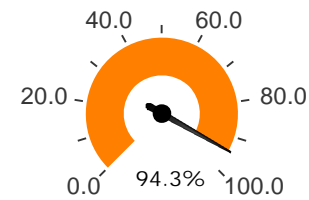


### 3-5 Reading Proficiency

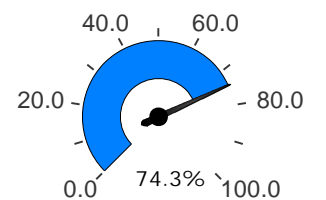


## Kindergarten Readiness

### Reading (DRA2)\* 3+ on text level

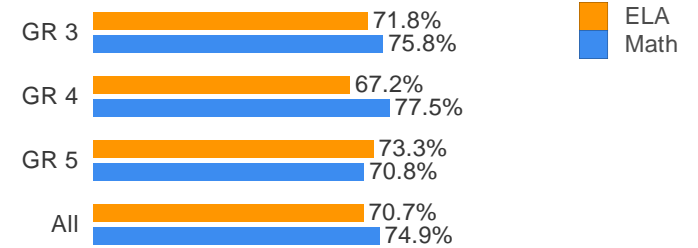


### Math (MAP) At/Above 40th Percentile

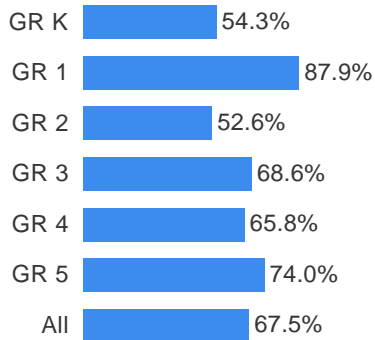


\*Other measures available soon

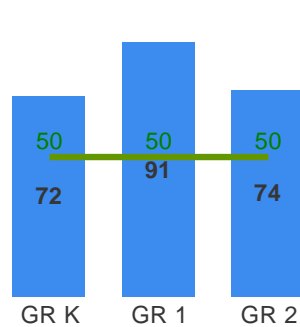
## Proficiency: 2017 SC READY ELA and Math



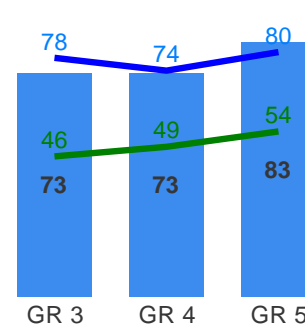
### MAP Math 2016-17



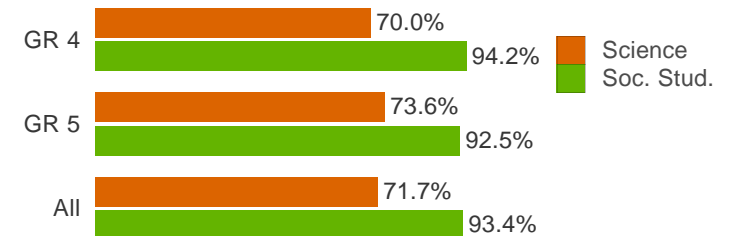
### K-2 Math Proficiency



### 3-5 Math Proficiency



## Proficiency: 2017 SCPASS Science and Social Studies



Green: National Norm (50th Percentile)

Green: Percentile that predicts scoring Meets on SC READY Grade 5

Blue: Percentile that predicts scoring Exceeds on SC READY Grade 5

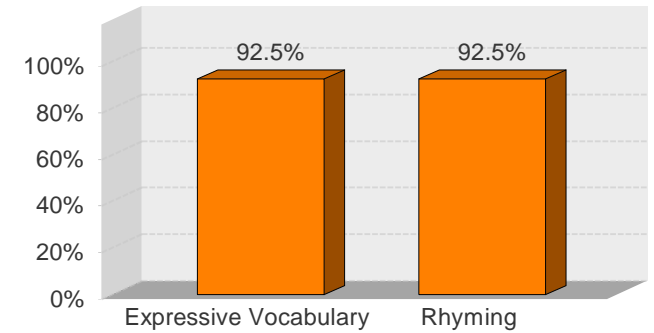
# Belle Hall Elem

## RESULTS BY ETHNICITY

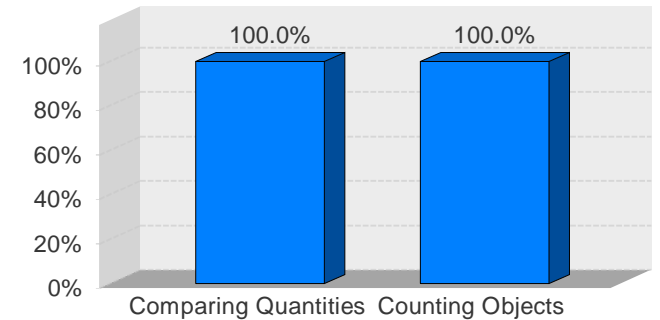
### Spring 2017 MAP Percent Meeting or Exceeding 1.0 Year Growth

		Number Tested	Black	Hispanic	White	Other
GR K	Math	Number Tested	11	3	88	3
GR K	Math	Percent Met/Exceeded	9.1%	66.7%	59.1%	66.7%
GR 1	Math	Number Tested	13	0	85	9
GR 1	Math	Percent Met/Exceeded	76.9%	N/A	88.2%	100.0%
GR 1	Reading	Number Tested	13	0	85	9
GR 1	Reading	Percent Met/Exceeded	76.9%	N/A	92.9%	33.3%
GR 2	Math	Number Tested	12	2	74	7
GR 2	Math	Percent Met/Exceeded	33.3%	0.0%	58.1%	42.9%
GR 2	Reading	Number Tested	12	2	74	7
GR 2	Reading	Percent Met/Exceeded	33.3%	100.0%	74.3%	28.6%
GR 3	Math	Number Tested	18	2	94	4
GR 3	Math	Percent Met/Exceeded	38.9%	100.0%	73.4%	75.0%
GR 3	Reading	Number Tested	18	2	94	4
GR 3	Reading	Percent Met/Exceeded	38.9%	50.0%	62.8%	50.0%
GR 4	Math	Number Tested	17	4	89	7
GR 4	Math	Percent Met/Exceeded	58.8%	75.0%	67.4%	57.1%
GR 4	Reading	Number Tested	17	4	89	7
GR 4	Reading	Percent Met/Exceeded	41.2%	50.0%	67.4%	42.9%
GR 5	Math	Number Tested	14	1	84	4
GR 5	Math	Percent Met/Exceeded	71.4%	0.0%	76.2%	75.0%
GR 5	Reading	Number Tested	14	1	83	4
GR 5	Reading	Percent Met/Exceeded	50.0%	0.0%	72.3%	25.0%
All	Math	Number Tested	85	12	514	34
All	Math	Percent Met/Exceeded	49.4%	58.3%	70.6%	70.6%
All	Reading	Number Tested	74	9	425	31
All	Reading	Percent Met/Exceeded	47.3%	55.6%	73.6%	93.5%

### Pre-Kindergarten Readiness ELA (myIGDI's)

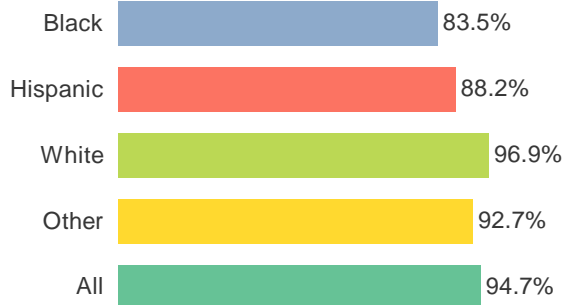


### Pre-Kindergarten Readiness Math (myIGDI's)

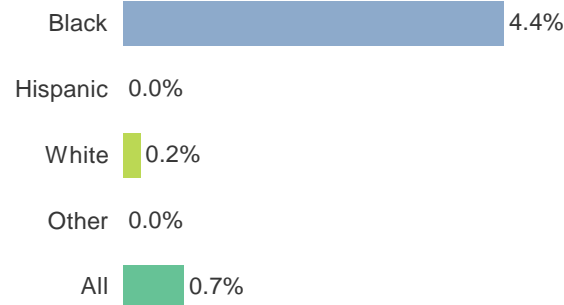


### CITIZENSHIP FACTORS

#### Percent Without Level 2 or 3 Referrals



#### Out of School Suspension Rates



### STUDENT ENGAGEMENT

#### Student Satisfaction with Learning Environment

