

SIC Annual Goals

Using data trends and best practices, the SIC has determined a need for additional support in STEAM education at Laurel Hill. In conjunction with our PTA, through both our Boosterthon fundraiser and Park West Campus Ed Fund Campaign, we have raised funds that will provide STEAM resources for our students.

Additionally, our SIC created the Loggerhead Advisory Board (LAB). This committee works under the SIC to plan and develop long term projects designed for the continual improvement of Laurel Hill. This year, our focus was redesigning our garden area, and our first ever Community STEM Night. Unfortunately, due to Covid-19, these projects were postponed, and will hopefully be rescheduled for Fall 2020.

Laurel Hill Primary SIC Contacts

*Chair: Ms. Emily Laird, Teacher
emily_laird@charleston.k12.sc.us*

*Principal: Ms. Ashley Dorsey
ashley_dorsey@charleston.k12.sc.us*

What do our teachers, students, and parents love about Laurel Hill?

“Laurel Hill is an incredible place for students and staff! We have the most supportive administration and loving children with a strong appetite for learning. The teachers and staff make every single day a pleasure through their kindness, teamwork, and thoughtfulness for each other. I feel lucky to be a part of such a strong and dedicated team of educators, and proud to call Laurel Hill my school” - Katherine LaMaster, Teacher of the Year

“Our family has been lucky to be a part of the Laurel Hill community since 2014. The teachers and staff are incredible. They are invested in making Laurel Hill a safe environment for our kids to grow, learn, and have fun.” -Taryn Kramer, parent and SIC member

Purpose of the Report

This Report is issued by the Laurel Hill Primary School Improvement Council in accordance with South Carolina law to share information on the school's progress in meeting various goals and objectives, the work of the SIC, and other accomplishments during the school year.

Laurel Hill Primary School

School Improvement Council Annual Report 2019-2020

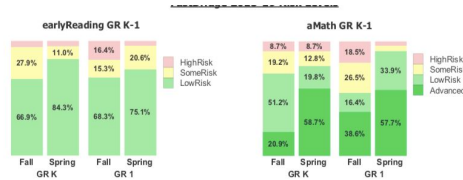


Laurel Hill Primary School
3100 Thomas Cario Blvd
Mt. Pleasant, SC 29466
843-849-2200
Laurelhill.ccsdschools.com

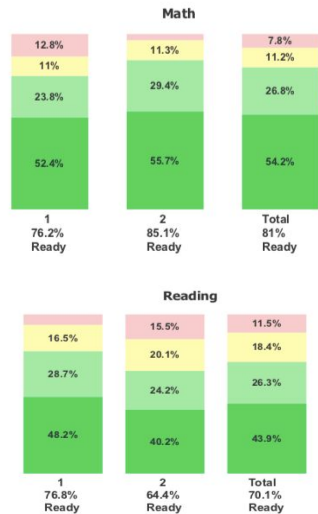
The vision of Laurel Hill Primary is to develop well-rounded learners in a child-centered, developmentally appropriate environment where each is capable of fulfilling their potential.

Student Achievement

The chart below shows the percentage of K-1 students at Laurel Hill that are low risk or advanced in Fastbridge Reading and Math. Over 75% of K-1 students were either low risk or advanced in both reading and math.



The chart below shows the percentage of 1st and 2nd grade students that demonstrated readiness, as measured by MAP data and measuring Lexile level. 81% demonstrated readiness in math; 70.1% in reading.



Awards and Honors

Top Rated Primary School in South Carolina

NAEYC Accreditation, 2008, 2013 & 2018

SC Literacy Spot Award, 2011

SCPTA Award of Excellence, 1st place, 2008

Riley SIC Award, Honorable Mention, 2008

Community of Readers Award, 2007

SC Governor's Council on Physical Fitness, 1st place, School Award, 2007

Red Carpet Award, 2005

Additional Information

Laurel Hill Primary continues to foster the child-centered atmosphere that has made it an award-winning school. At LHPS, we are committed to the success of each child. Our students continue to grow in all areas, and we are determined to provide a developmentally appropriate learning environment. We are proud to consistently be the highest rated primary school in the state.

Laurel Hill is a PBIS school and has seen excellent results. In addition, we are proud to have maintained our accreditation through the National Association of Educators of Young Children (NAEYC). This prestigious status has been described as the gold standard by which early childhood programs are evaluated.

Due to Covid-19, many of our annual school events, including our 1st annual Community STEM Night, were postponed. We appreciate the support from our PTA, Park West Campus Education Fund, and the parents and community, whose partnerships involve volunteering, fundraising, and organizing various events. The primary goal at Laurel Hill Primary is to challenge every one of our students to meet his or her greatest potential.