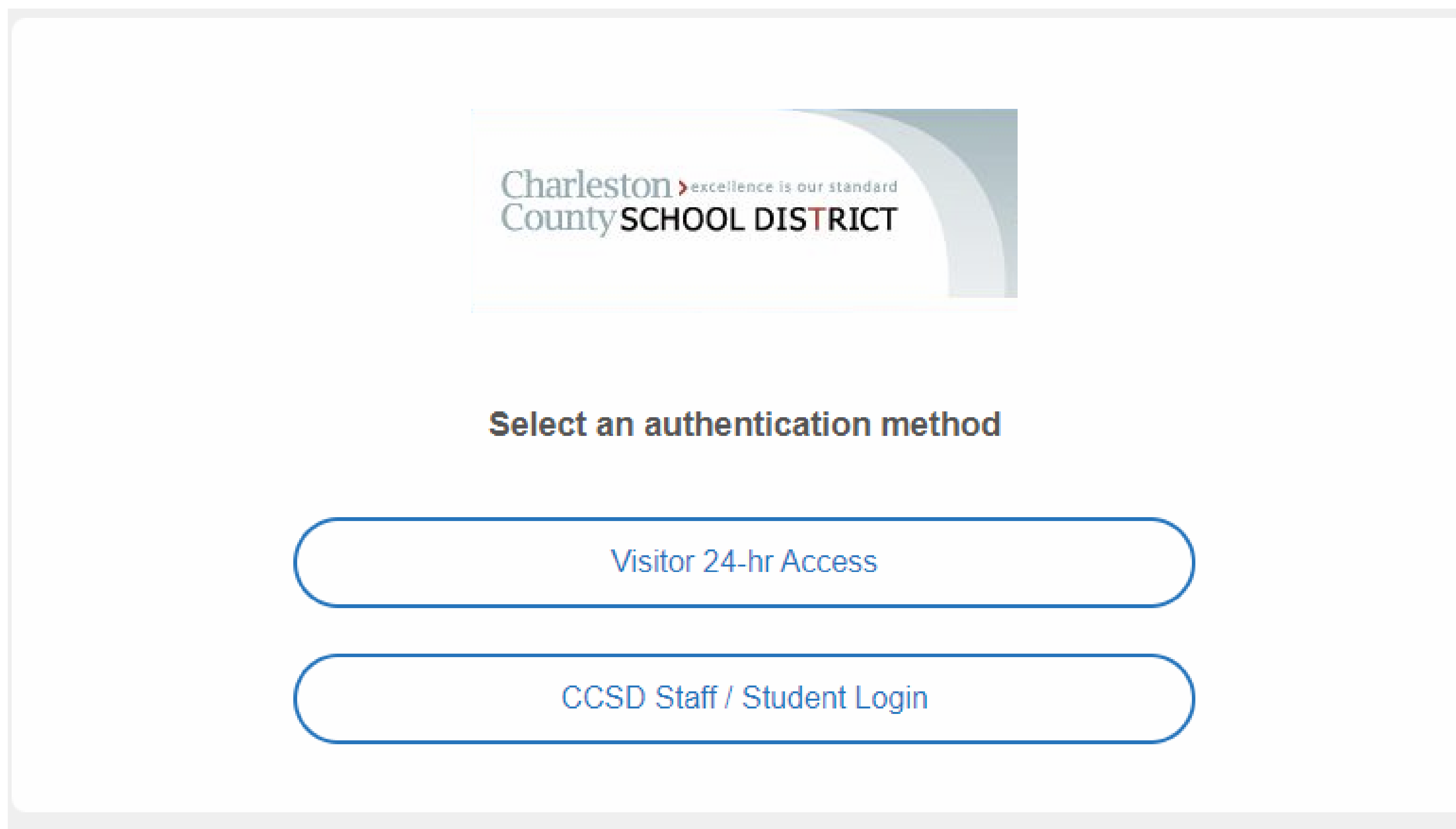


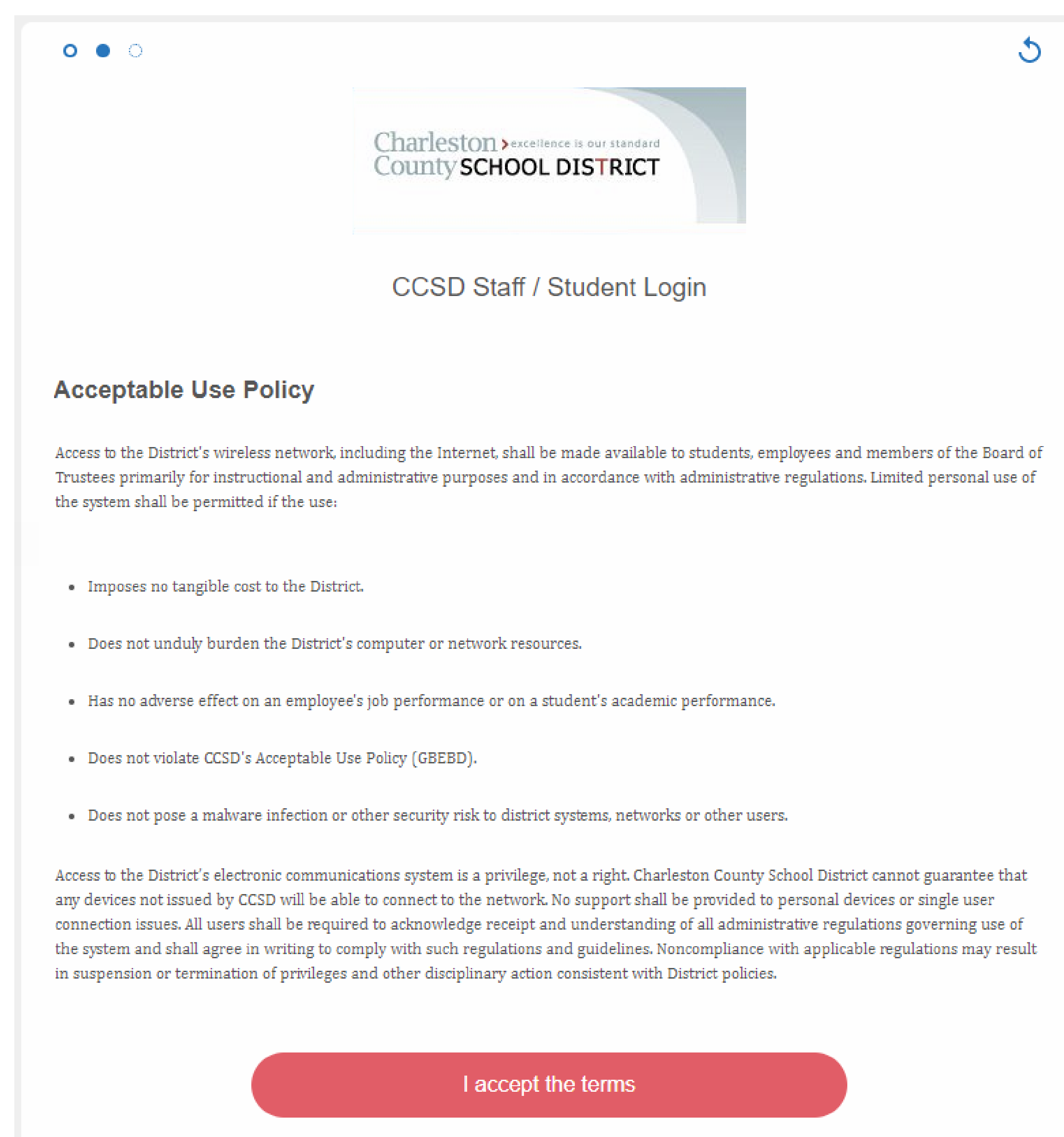
BYOD Certificate Instructions

Windows Instructions

Step 1: Connect to Guest_CCSD Wireless Network, Select Staff/Student.



Step 2: Read and accept terms.

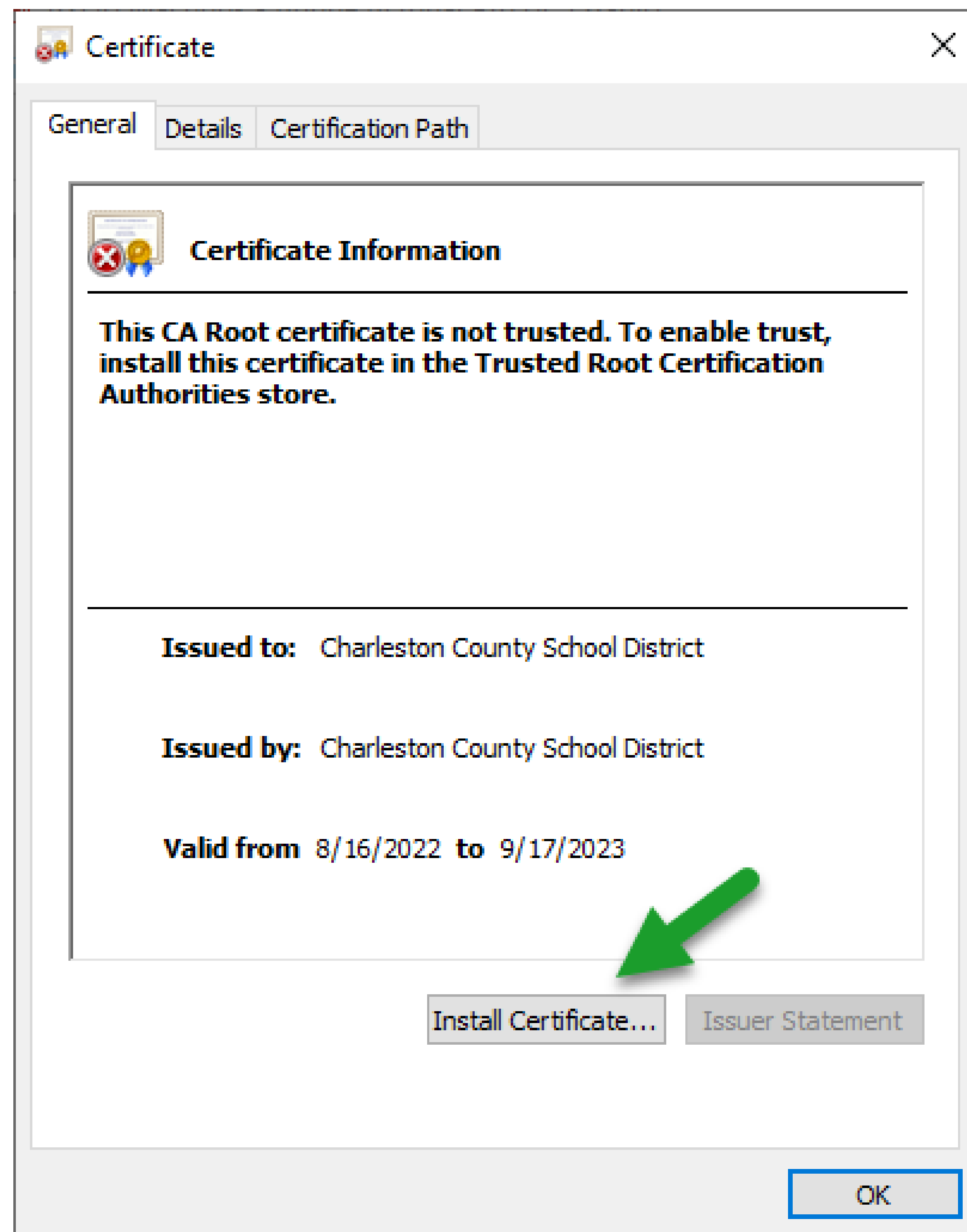


Step 3: Enter your CCSD username and password, then press continue.

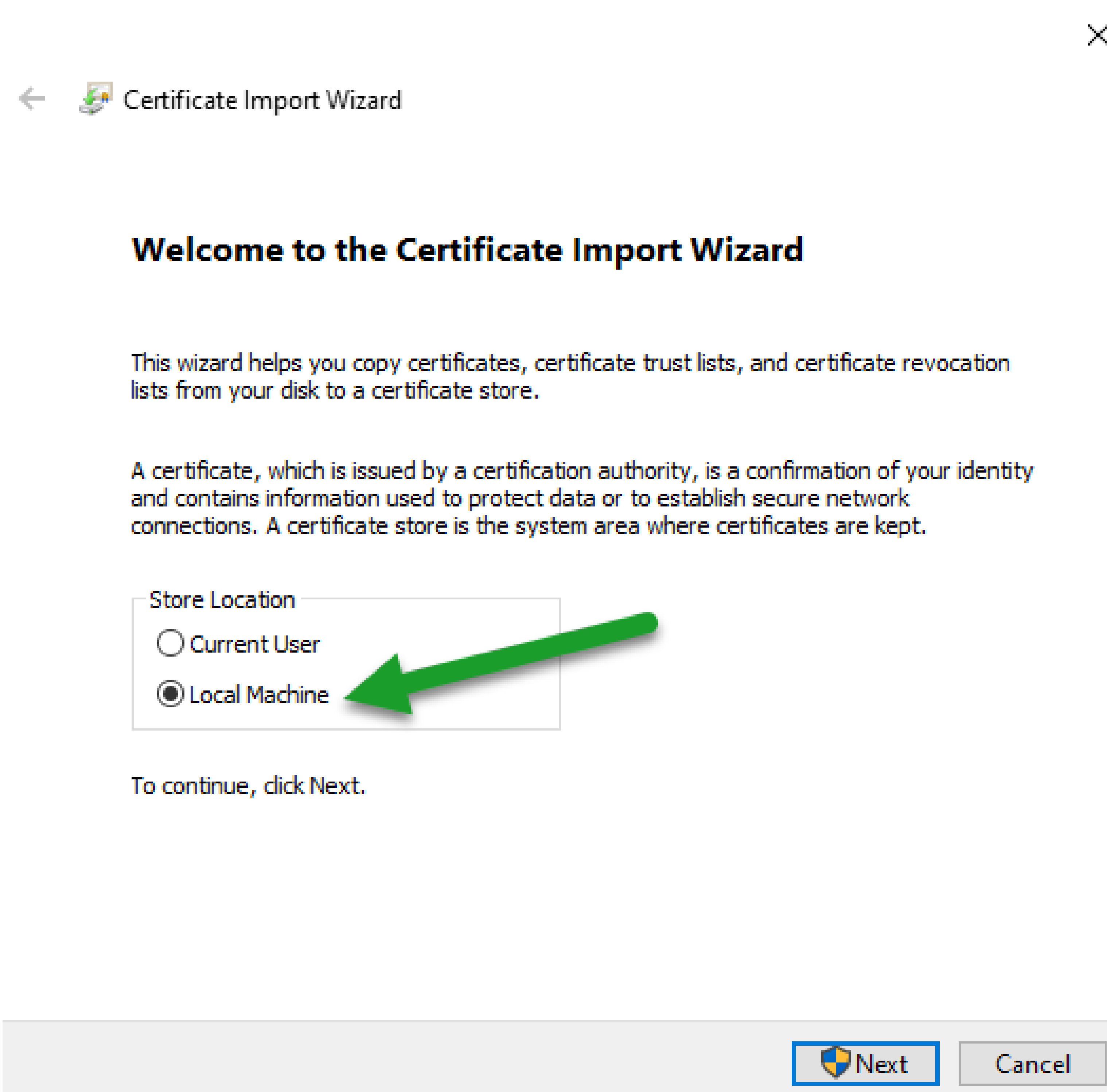
Step 4: **Do not click Download.** Scroll to the bottom of the next page and press **Continue.**

Step 5: Go to <http://iboss1-1/cert> in a web browser and the certificate will download automatically.

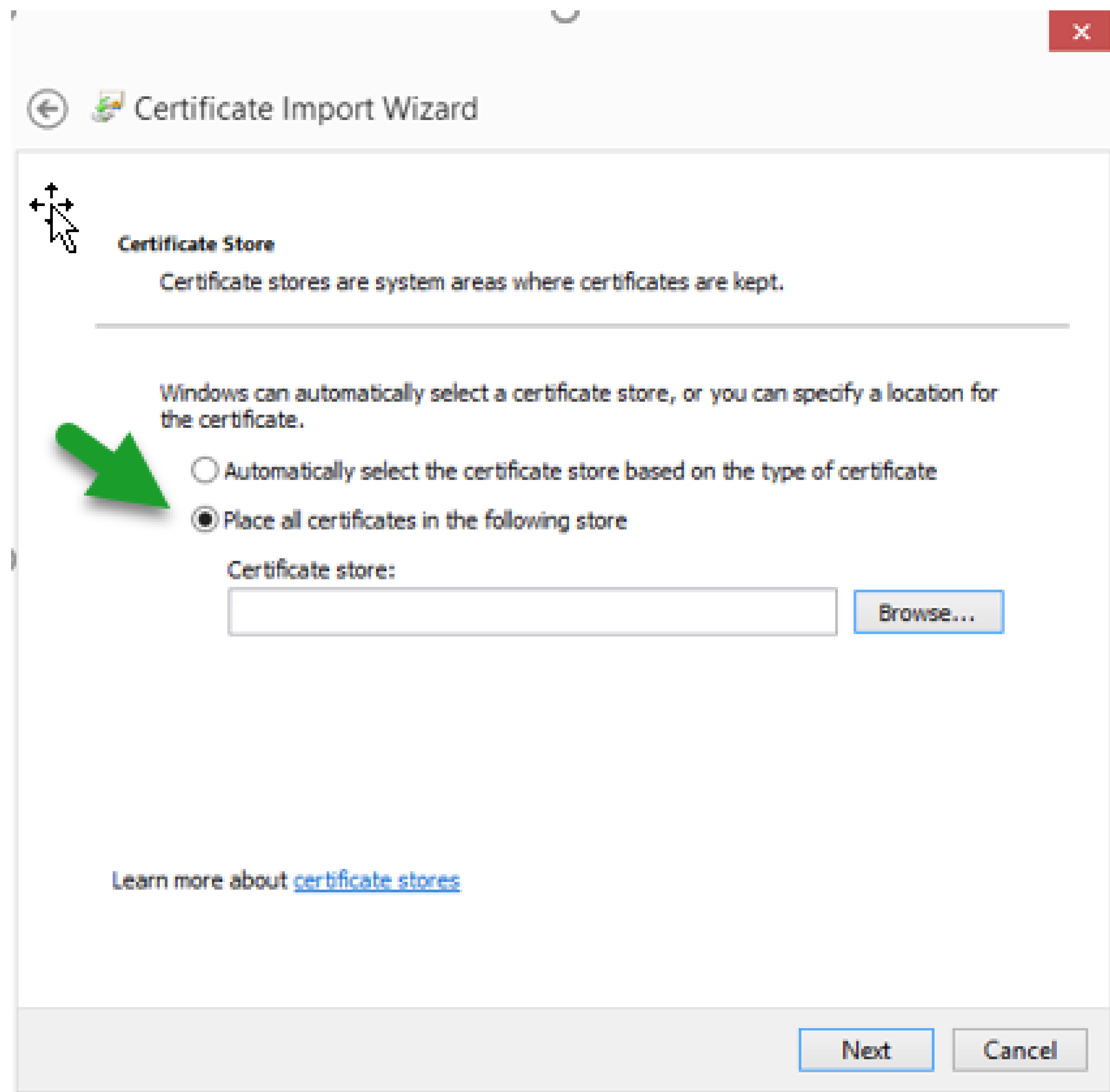
Step 6: When the certificate finishes downloading, it will appear in your default Downloads folder; double click it.



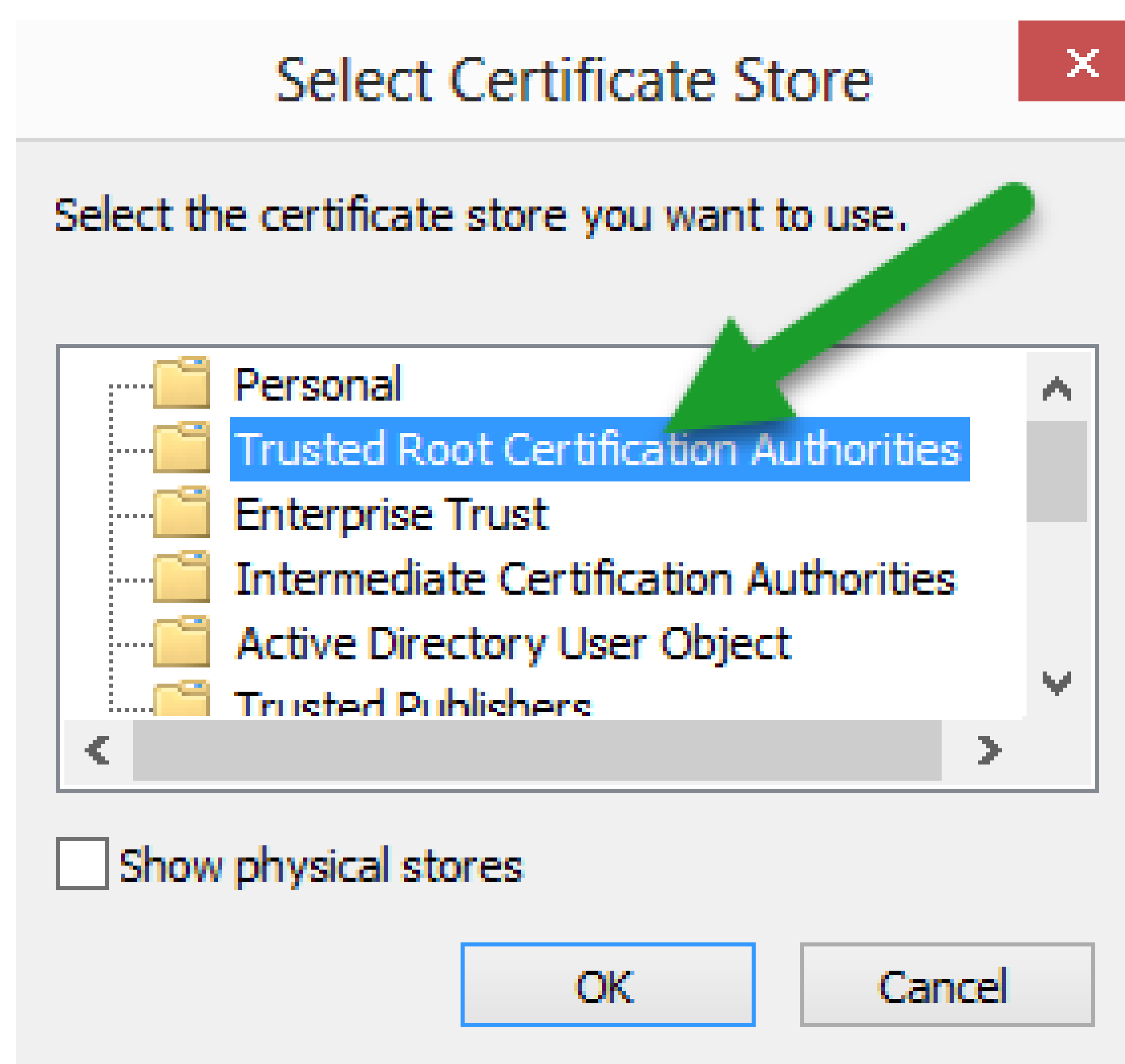
Step 7: You may be asked whether to install for the Current User or the Local Machine; if asked, you should normally select **Local Machine**. In either case, click Next.



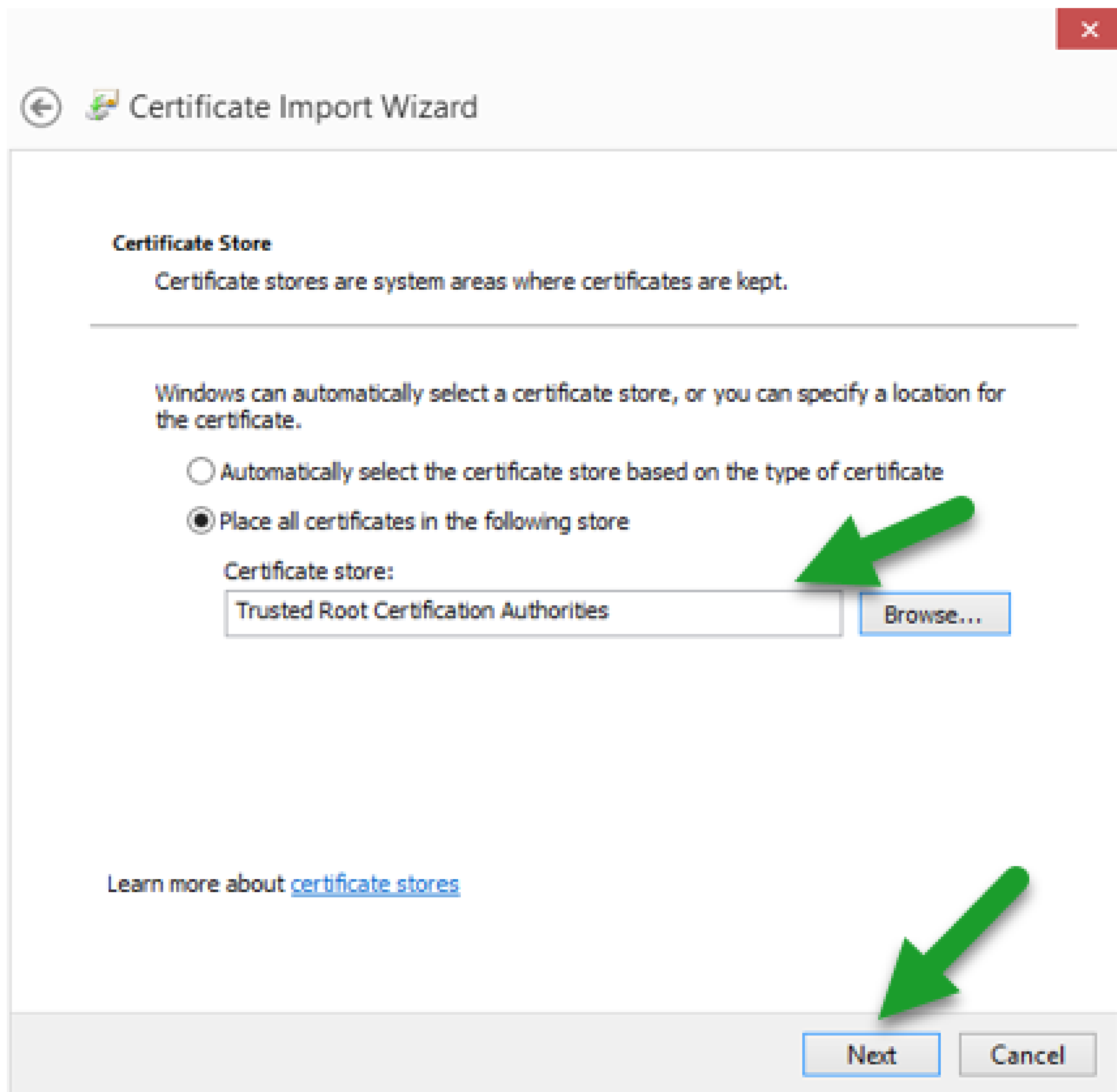
Step 8: The next screen will ask whether you would like to have Windows automatically select a certificate store or you would like to select it yourself. Opt to select yourself, by clicking on **Place all certificates in the following store**. Then, press the Browse button to the right.



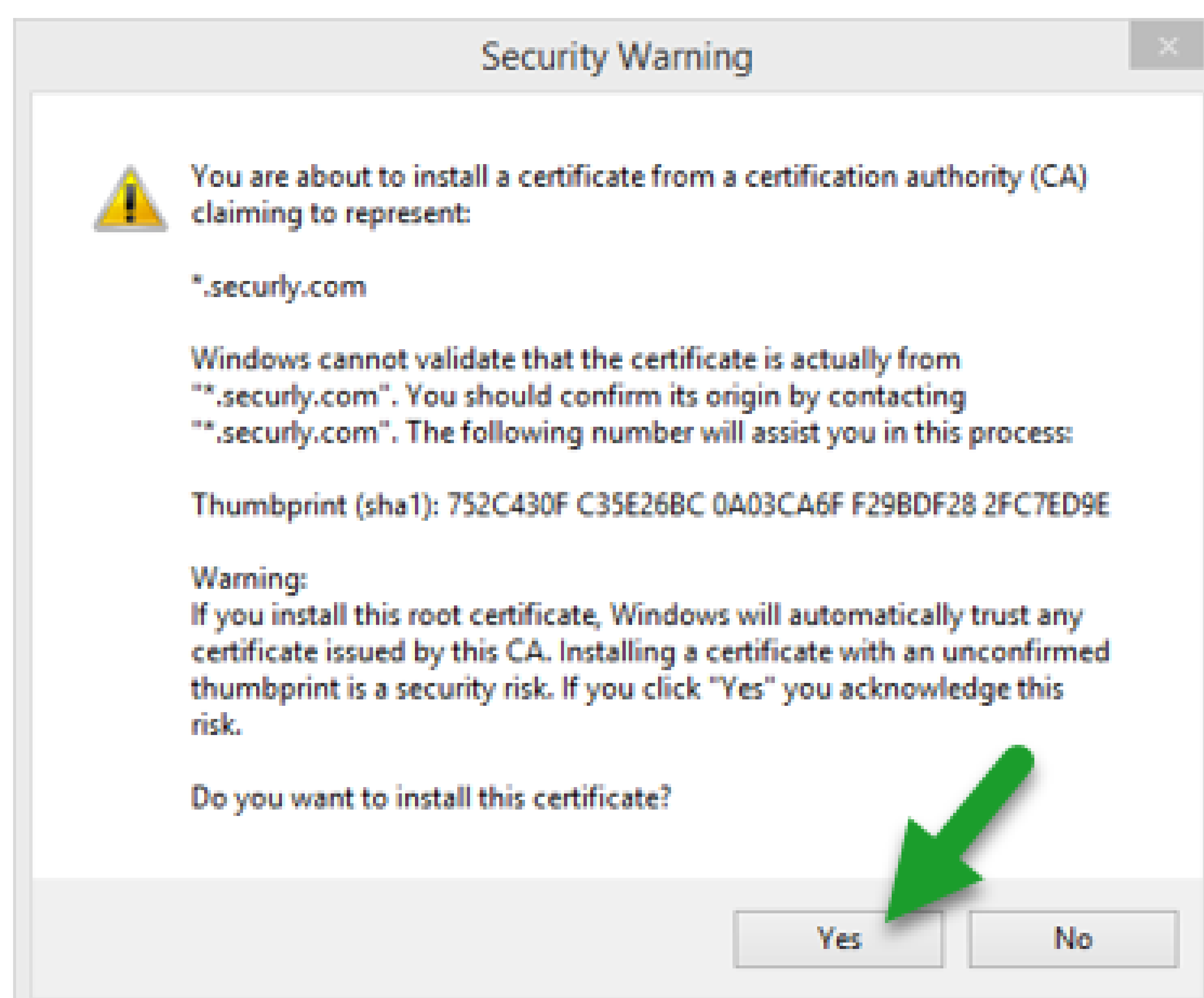
Step 8: The Select Certificate Store dialogue will open. Highlight **Trusted Root Certification Authorities** in the list, and then press **OK** at the bottom.



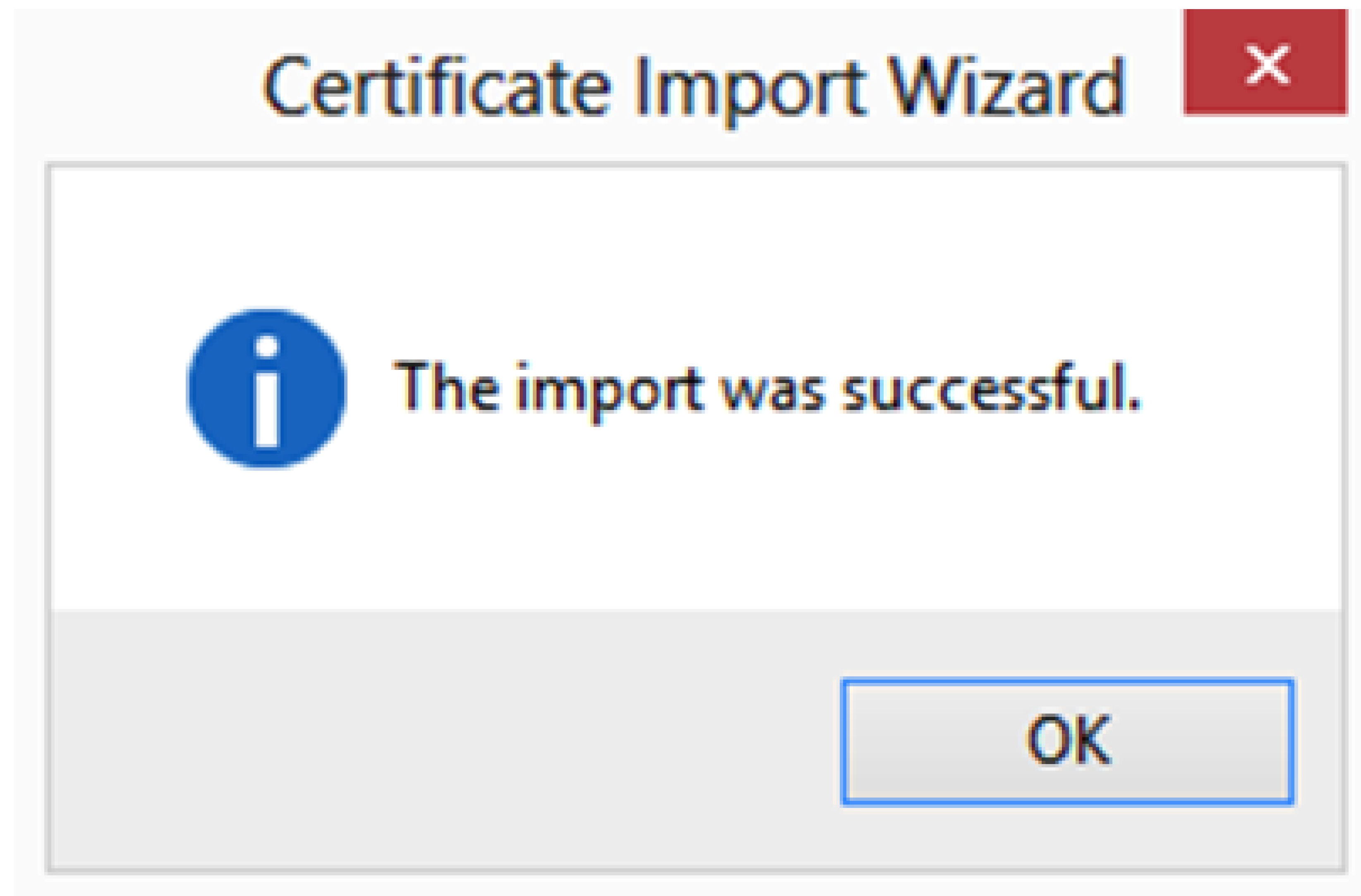
Step 9: the Certificate store box should now show **Trusted Root Certification Authorities**. Press Next again.



Step 10: A Security Warning will appear, asking if you're sure you'd like to install the certificate. Click the **Yes** button.



Step 10: A confirmation will appear, indicating that the certificate import was successful. Press **OK**.



Step 8: You're all done.
Have a Great Day!!