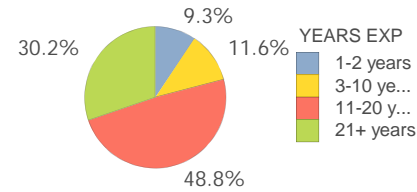


Academic Magnet High

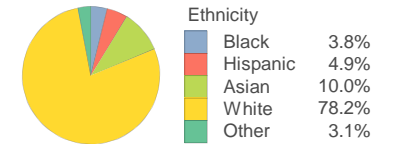
SCHOOL DEMOGRAPHICS

Total 2018-19 Enrollment 650	Poverty Index 8	Gifted Academic 72.4%	% Arts Participation/Enrollment 38.3%	
Student Retentions 0.0%	% Overage by 2 or more years N/A	% English Lang. Learner 5.5%	% Special Education 0.0%	% Plan 504 3.4%

Teacher Experience

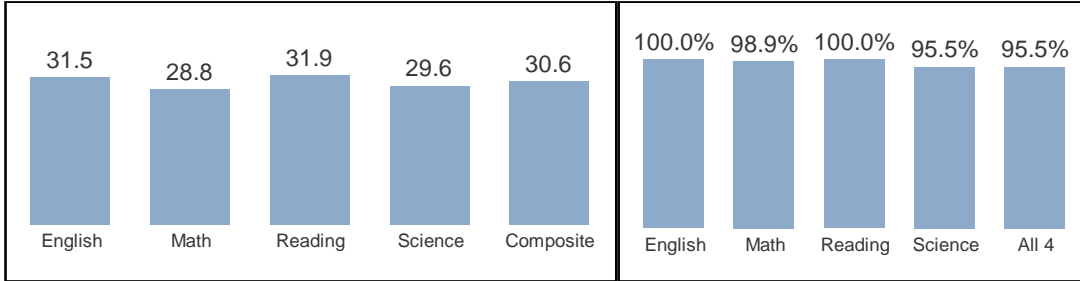


Student Ethnicity

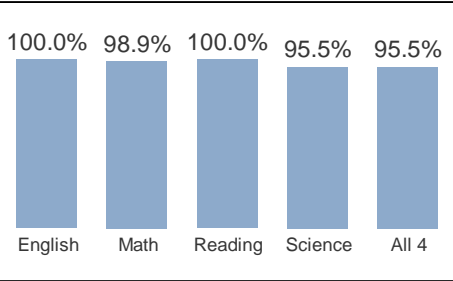


ACADEMIC ACHIEVEMENT

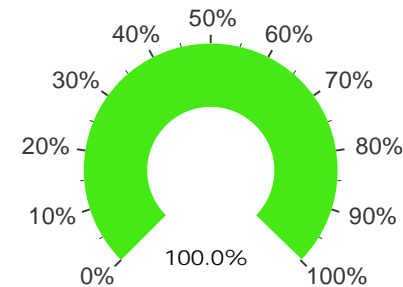
Average 2019 ACT Scores (11th Grade)



% Meeting ACT Benchmark 2019



2019 Graduation Rate



Grade Level Less than Expected

GR 9 0
GR 10 0
GR 11 0
GR 12 0

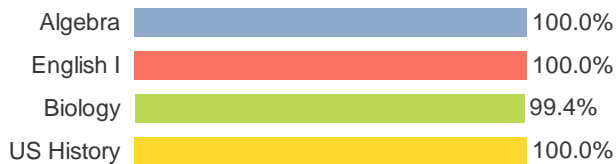
Students Meeting or Exceeding College Readiness Pathway Benchmarks

College and Career Ready, ACT 20	100.00%
LIFE Scholarship, ACT 24	98.41%
Palmetto Fellows Scholarship, ACT 27	87.30%

CITIZENSHIP FACTORS

Students without Level 2 or 3 Referrals 99.4%
Out of School Suspension Rate 0.5%

HS End of Course (C or Higher)



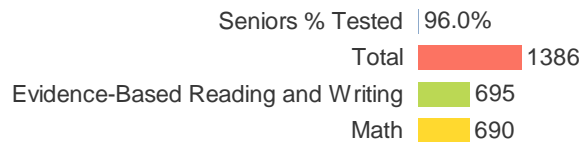
Citizenship Assessment

ACCUPLACER
(Not currently available)

AP, CTE, Dual Credit Courses

Enrolled in 1 or More AP Course	449
Enrolled in 1 or More CTE Course	227
Enrolled in 1 or More Dual Credit Course	7
AP Results of 3 or higher	90.5%
CTE Completers	0
Dual Credit Successful completion rate	100.0%

SAT Average Score



ASVAB: AFOT Scores

Academic Magnet High

RESULTS BY ETHNICITY

2019 ACT Scores (11th Grade)

Average ACT Score

	Black	Hispanic	White	Other
English	27	32	31.3	32.8
Math	23.5	30.2	28.3	32.1
Reading	27.5	30.2	31.9	33.3
Science	23.5	29.4	29.2	32.8
Composite	25.5	30.6	30.3	33

% Meeting ACT Benchmark

	Black	Hispanic	White	Other
English	100.0%	100.0%	100.0%	100.0%
Math	100.0%	100.0%	98.6%	100.0%
Reading	100.0%	100.0%	100.0%	100.0%
Science	100.0%	80.0%	95.7%	100.0%
All 4	100.0%	80.0%	95.7%	100.0%

Students Meeting or Exceeding College Readiness Pathway Benchmarks

	Black	Hispanic	White	Other
College and Career Ready, ACT 20	100.0%	100.0%	100.0%	100.0%
LIFE Scholarship, ACT 24	66.7%	100.0%	98.7%	100.0%
Palmetto Fellows Scholarship, ACT 27	33.3%	81.8%	87.2%	96.2%

2019 WIN Ready to Work Credential Levels

	Total	Black	Hispanic	White	Other
None	0.0%	0.0%	0.0%	0.0%	0.0%
Bronze	0.0%	0.0%	0.0%	0.0%	0.0%
Silver	26.3%	44.4%	41.7%	24.0%	23.8%
Gold	39.5%	55.6%	33.3%	40.8%	28.6%
Platinum	34.1%	0.0%	25.0%	35.2%	47.6%
Silver or Higher	100.0%	100.0%	100.0%	100.0%	100.0%
Passed ESS*	98.8%	100.0%	91.7%	99.2%	100.0%

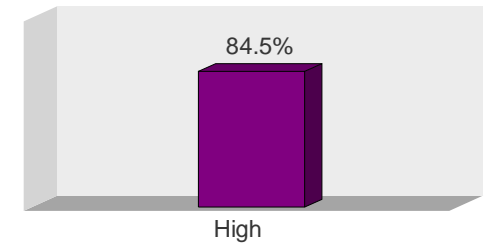
*Essential Soft Skills Assessment

STUDENT ENGAGEMENT

Students in Extracurriculars

Black	0.0%
Hispanic	0.0%
White	0.4%
Other	0.0%
All	0.3%

Student Satisfaction with Learning Environment



2019 Graduation Rate

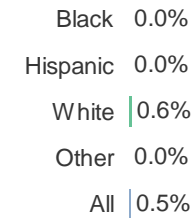


CITIZENSHIP FACTORS

Percent Without Level 2 or 3 Referrals



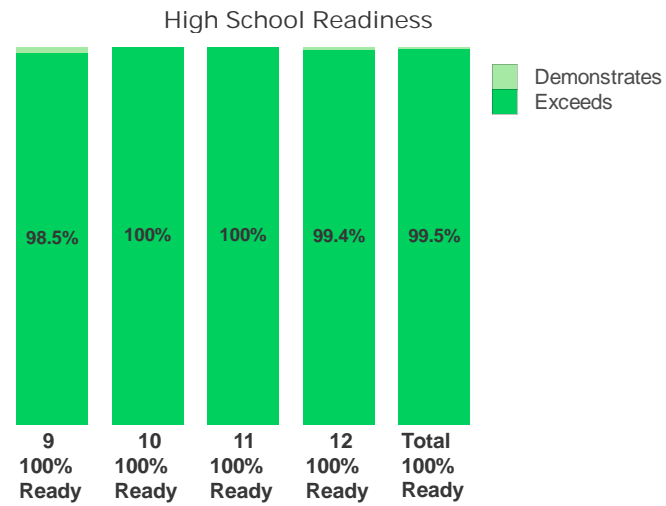
Out of School Suspensions



Academic Magnet High

Readiness Metric

2018 - 2019 Readiness Metric



School Dashboard User Guide 2019

School Demographics, Teacher Experience, and Student Ethnicity: Based on information coded in PowerSchool as of spring 2019.

Academic Achievement – Elementary and Middle Schools

MAP Growth – Reading and Math MAP results spring 2018 to spring 2019. Percent of students who met or exceeded 1.0 year’s growth (based on NWEA norms).

MAP Proficiency – Reading and Math progress toward important MAP benchmarks, as of spring 2019. School’s median student percentile rank by grade is displayed in the bars. Lines are as follows:

- Gr. K-2: the national norm (50th percentile) is displayed as a reference point.
- Gr. 3-5: lines reflect spring percentiles that students should be at to be predicted to score Meets Expectations (lower line) or Exceeds Expectations (upper line) on SC READY in spring of grade 5.
- Gr. 6-8: lines reflect spring percentiles that students should be at to be predicted to attain certain composite scores (out of 36 points) on the ACT in high school. Lowest line (20) is the level that the SC Department of Education (SCDE) has established as indicative of college readiness; Middle line (24) is a qualifying score to be eligible for the LIFE Scholarship in college; Top line (27) is a qualifying score to be eligible for the Palmetto Fellows Scholarship in college. See www.che.sc.gov for additional scholarship eligibility requirements.

FastBridge (Gr. K and 1) Risk Levels – Stacked bars display the percent of students who scored at each risk level in the FastBridge assessment in fall 2018 and spring 2019 in reading (earlyReading) and math (aMath). Only students with scores for both assessment periods are included.

KRA Kindergarten Readiness – Percent scoring at Demonstrating Readiness on fall 2018 Kindergarten Readiness Assessment (KRA), overall and by domain.

myIGDIs Pre-Kindergarten Readiness ELA and Math – Spring 2019 assessment; scores in Tier 1 suggest that students are adequately prepared (i.e., not in need of intense instruction). ELA results are displayed as percent in Tier 1 on Picture Naming (Expressive Vocabulary) and Rhyming; Math results are displayed as percent in Tier 1 on Quantity Comparison (Comparing Quantities) and One-to-One Correspondence (Counting Objects).

SC READY ELA and Math Proficiency – Percent scoring Meets or Exceeds in spring 2019.

SCPASS Science and Social Studies – Percent scoring Meets or Exceeds in spring 2019 in Science (gr. 4, 6, 8) and percent scoring Met or Exemplary in spring 2019 in Social Studies (gr. 5, 7).

End of Course – Percent of middle school students scoring C or higher on algebra, biology, or English high-school credit gateway course assessments during 2018-19.

Academic Achievement – High Schools

ACT (gr.11) Scores – Average score by subject and overall composite in spring 2019.

ACT (gr.11) % Meeting ACT Benchmark – Percent who met or exceeded ACT-established college-readiness benchmarks in spring 2019. Benchmarks indicate a high probability of success in credit-bearing college-level courses: English (18) predicts English Composition success; Reading (22) predicts social science success; Math (22) predicts algebra success; Science (23) predicts biology success.

ACT (gr.11) % Meeting or Exceeding College Readiness Pathway Benchmarks – Percent who met or exceeded CCSD-established benchmarks for college readiness pathways: 20 is the cut score established by the SCDE as indicative of college readiness; 24 is the qualifying score for LIFE Scholarship eligibility; 27 is the qualifying score for Palmetto Fellows Scholarship eligibility. See www.che.sc.gov for additional eligibility requirements.

End of Course – Percent of grade 9-12 students who scored C or higher on algebra, biology, English, and US History gateway course assessments during 2018-19.

SAT – Average SAT score for reading, math, and total, from the 2019 senior class. Each section is scored from 200-800.

ASVAB (AFQT Score) – Median Armed Forces Qualification Test (AFQT) score on the Armed Services Vocational Aptitude Battery (ASVAB) during 2018-19, and percent of students scoring at or above 31, which is the minimum score required for a high school graduate to qualify for the military, and is the level identified by the SCDE as career ready.

WIN Ready to Work – Grade 11 students were assessed in three subjects (applied mathematics, reading for information, and locating information), as well as five essential soft skills (ESS) (cooperation with others, resolving conflicts and negotiation, solving problems and making decisions, observing critically, and taking responsibility for learning). Displayed is percent earning each credential (Bronze, Silver, Gold, Platinum) from the three subject tests; percent earning a Silver or higher credential (indicative of career readiness); and percent passing ESS.

2019 Graduation Rate – On-time, four-year graduation rate for 2019.

Grade Level Less than Expected – Number of high school students whose spring 2019 coded grade level was less than expected based on their high school entry date.

Citizenship Factors – Percent of students with no Level 2 or 3 discipline referrals; % with out-of-school suspensions. Gr.9-11 US Government enrollment and % passing Civics assessment in that course.

AP, CTE, Dual Credit Courses (high schools) – Enrollments during 2018-19; percent of Advanced Placement (AP) tests with scores of 3 or higher; number of students who earned all required units in a state-recognized CTE program; and percent of dual credit students who successfully completed a course with a grade of C or higher.

Student Engagement – Participation in extracurricular activities (high school) during 2018-19 (as coded in PowerSchool). Percent of students reporting that they are satisfied with the learning environment at their school, based on the spring 2019 Climate Survey administered by the SCDE.

Readiness Metric – Elementary and Middle Schools – The stacked bars display, by grade, the percent of students that fell into each of four readiness levels in reading and math based on last spring’s results. The levels are Below Readiness, Approaches Readiness, Demonstrates Readiness, and Exceeds Readiness. Also displayed is an overall readiness percentage, which is the sum of the Demonstrates and Exceeds categories. Each student’s level combines available measures into one simple readiness metric to represent the degree to which the student is progressing as expected along the trajectory towards college and career readiness. The levels incorporate multiple measures where available, including FastBridge Reading and Math; NWEA MAP Reading and Math; SC READY ELA, Math, and Reading subtest; and Lexiles and Quantiles from multiple assessments. Use of multiple measures allows more than one opportunity for students to demonstrate readiness. When multiple measures are available, the result associated with the highest readiness level is assigned as the student’s overall readiness level.