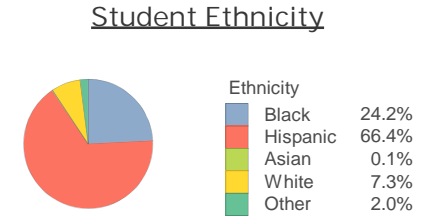
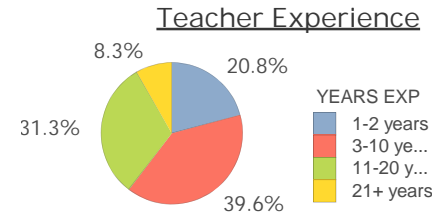


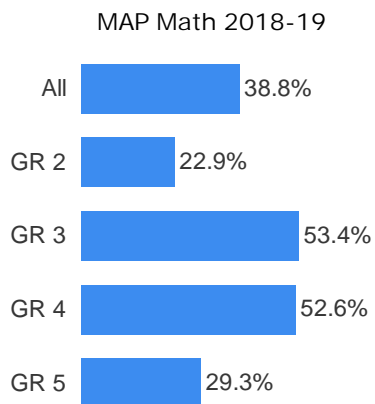
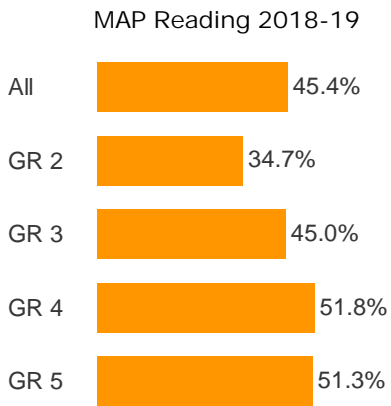
Pinehurst Elementary

SCHOOL DEMOGRAPHICS

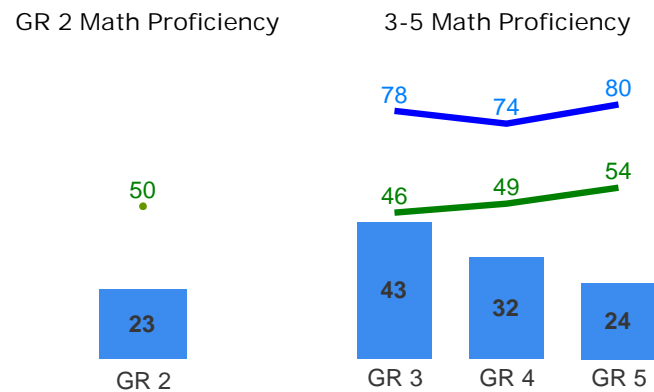
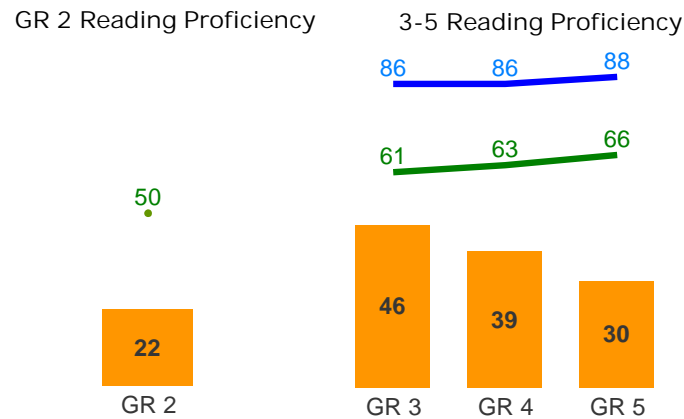
Total 2018-19 Enrollment	Poverty Index	Gifted Academic	% Arts Participation/Enrollment	
768	88.7	1.7%	96.5%	
Student Retentions	% Overage by 1 or more years	% English Lang. Learner	% Special Education	% Plan 504
0.3%	4.7%	66.7%	9.1%	0.7%



Percent of Students Meeting or Exceeding 1.0 Year Growth



MAP Spring 2019 Median Student Percentile Rank



Green: National Norm (50th Percentile)

Green: Percentile that predicts scoring Meets on SC READY Grade 5

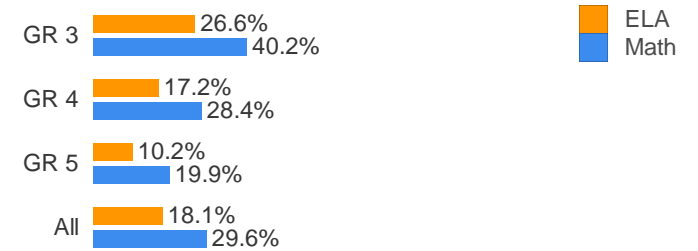
Blue: Percentile that predicts scoring Exceeds on SC READY Grade 5

Kindergarten Readiness

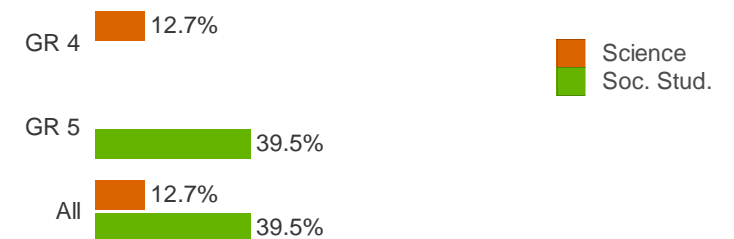
KRA: Demonstrating Readiness

No data to display

Proficiency: 2019 SC READY ELA and Math



Proficiency: 2019 SCPASS Science and Social Studies



Pinehurst Elementary

RESULTS BY ETHNICITY

Spring 2019 MAP Percent Meeting or Exceeding 1.0 Year Growth

		Number Tested	Black	Hispanic	White	Other
GR 2	Math	Number Tested	40	91	12	1
GR 2	Math	Percent Met/Exceeded	22.5%	24.2%	8.3%	
GR 2	Reading	Number Tested	40	91	12	1
GR 2	Reading	Percent Met/Exceeded	32.5%	36.3%	25.0%	
GR 3	Math	Number Tested	39	95	12	2
GR 3	Math	Percent Met/Exceeded	43.6%	55.8%	58.3%	
GR 3	Reading	Number Tested	39	95	13	2
GR 3	Reading	Percent Met/Exceeded	30.8%	50.5%	46.2%	
GR 4	Math	Number Tested	24	83	6	1
GR 4	Math	Percent Met/Exceeded	50.0%	53.0%		
GR 4	Reading	Number Tested	24	83	6	1
GR 4	Reading	Percent Met/Exceeded	41.7%	54.2%		
GR 5	Math	Number Tested	40	96	13	1
GR 5	Math	Percent Met/Exceeded	25.0%	30.2%	30.8%	
GR 5	Reading	Number Tested	40	96	13	1
GR 5	Reading	Percent Met/Exceeded	50.0%	51.0%	53.8%	
All	Math	Number Tested	143	365	43	5
All	Math	Percent Met/Exceeded	33.6%	40.5%	37.2%	
All	Reading	Number Tested	143	365	44	5
All	Reading	Percent Met/Exceeded	38.5%	47.9%	43.2%	

Pre-Kindergarten Readiness Spring ELA (myIGDI's)

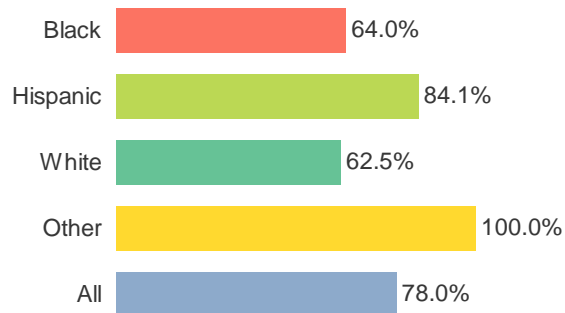
No data to display

Pre-Kindergarten Readiness Spring Math (myIGDI's)

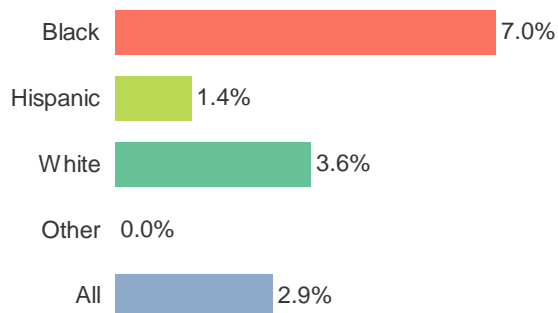
No data to display

CITIZENSHIP FACTORS

Percent Without Level 2 or 3 Referrals

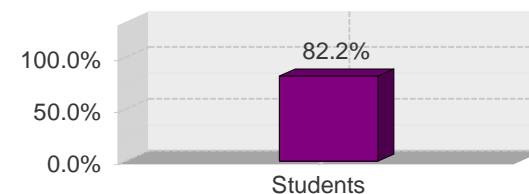


Out of School Suspension Rates



STUDENT ENGAGEMENT

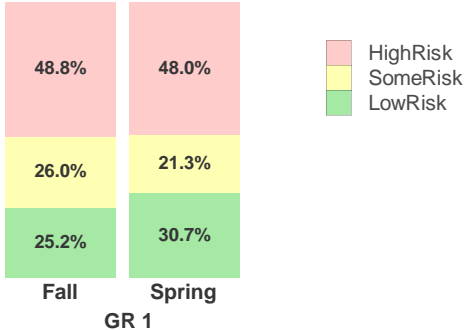
Student Satisfaction with Learning Environment



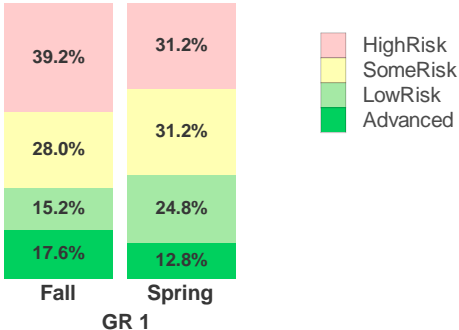
Pinehurst Elementary

FastBridge 2018-19 Risk Levels

earlyReading GR K-1



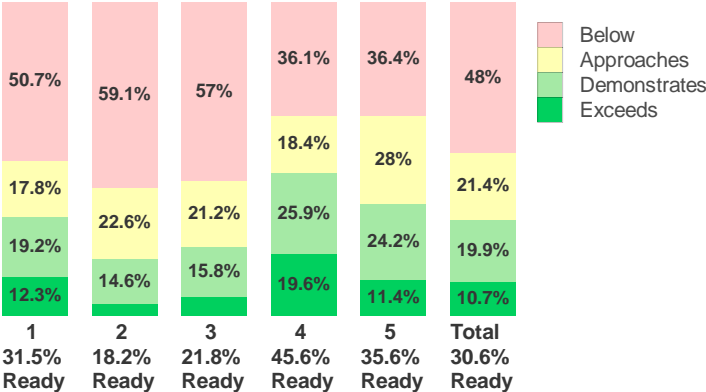
aMath GR K-1



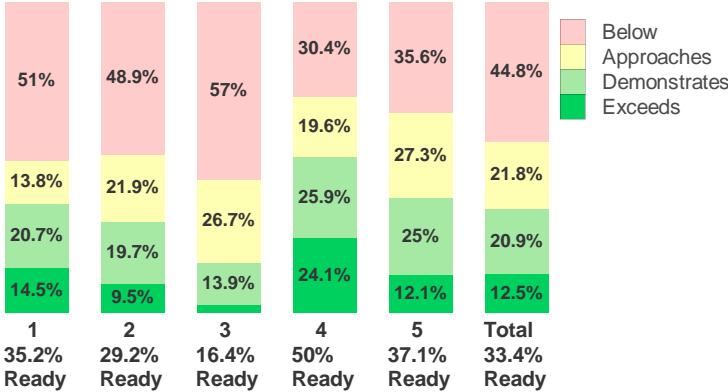
Readiness Metric

2018 - 2019 Readiness Metric

Reading



Math



School Dashboard User Guide 2019

School Demographics, Teacher Experience, and Student Ethnicity: Based on information coded in PowerSchool as of spring 2019.

Academic Achievement – Elementary and Middle Schools

MAP Growth – Reading and Math MAP results spring 2018 to spring 2019. Percent of students who met or exceeded 1.0 year’s growth (based on NWEA norms).

MAP Proficiency – Reading and Math progress toward important MAP benchmarks, as of spring 2019. School’s median student percentile rank by grade is displayed in the bars. Lines are as follows:

- Gr. K-2: the national norm (50th percentile) is displayed as a reference point.
- Gr. 3-5: lines reflect spring percentiles that students should be at to be predicted to score Meets Expectations (lower line) or Exceeds Expectations (upper line) on SC READY in spring of grade 5.
- Gr. 6-8: lines reflect spring percentiles that students should be at to be predicted to attain certain composite scores (out of 36 points) on the ACT in high school. Lowest line (20) is the level that the SC Department of Education (SCDE) has established as indicative of college readiness; Middle line (24) is a qualifying score to be eligible for the LIFE Scholarship in college; Top line (27) is a qualifying score to be eligible for the Palmetto Fellows Scholarship in college. See www.che.sc.gov for additional scholarship eligibility requirements.

FastBridge (Gr. K and 1) Risk Levels – Stacked bars display the percent of students who scored at each risk level in the FastBridge assessment in fall 2018 and spring 2019 in reading (earlyReading) and math (aMath). Only students with scores for both assessment periods are included.

KRA Kindergarten Readiness – Percent scoring at Demonstrating Readiness on fall 2018 Kindergarten Readiness Assessment (KRA), overall and by domain.

myIGDIs Pre-Kindergarten Readiness ELA and Math – Spring 2019 assessment; scores in Tier 1 suggest that students are adequately prepared (i.e., not in need of intense instruction). ELA results are displayed as percent in Tier 1 on Picture Naming (Expressive Vocabulary) and Rhyming; Math results are displayed as percent in Tier 1 on Quantity Comparison (Comparing Quantities) and One-to-One Correspondence (Counting Objects).

SC READY ELA and Math Proficiency – Percent scoring Meets or Exceeds in spring 2019.

SCPASS Science and Social Studies – Percent scoring Meets or Exceeds in spring 2019 in Science (gr. 4, 6, 8) and percent scoring Met or Exemplary in spring 2019 in Social Studies (gr. 5, 7).

End of Course – Percent of middle school students scoring C or higher on algebra, biology, or English high-school credit gateway course assessments during 2018-19.

Academic Achievement – High Schools

ACT (gr.11) Scores – Average score by subject and overall composite in spring 2019.

ACT (gr.11) % Meeting ACT Benchmark – Percent who met or exceeded ACT-established college-readiness benchmarks in spring 2019. Benchmarks indicate a high probability of success in credit-bearing college-level courses: English (18) predicts English Composition success; Reading (22) predicts social science success; Math (22) predicts algebra success; Science (23) predicts biology success.

ACT (gr.11) % Meeting or Exceeding College Readiness Pathway Benchmarks – Percent who met or exceeded CCSD-established benchmarks for college readiness pathways: 20 is the cut score established by the SCDE as indicative of college readiness; 24 is the qualifying score for LIFE Scholarship eligibility; 27 is the qualifying score for Palmetto Fellows Scholarship eligibility. See www.che.sc.gov for additional eligibility requirements.

End of Course – Percent of grade 9-12 students who scored C or higher on algebra, biology, English, and US History gateway course assessments during 2018-19.

SAT – Average SAT score for reading, math, and total, from the 2019 senior class. Each section is scored from 200-800.

ASVAB (AFQT Score) – Median Armed Forces Qualification Test (AFQT) score on the Armed Services Vocational Aptitude Battery (ASVAB) during 2018-19, and percent of students scoring at or above 31, which is the minimum score required for a high school graduate to qualify for the military, and is the level identified by the SCDE as career ready.

WIN Ready to Work – Grade 11 students were assessed in three subjects (applied mathematics, reading for information, and locating information), as well as five essential soft skills (ESS) (cooperation with others, resolving conflicts and negotiation, solving problems and making decisions, observing critically, and taking responsibility for learning). Displayed is percent earning each credential (Bronze, Silver, Gold, Platinum) from the three subject tests; percent earning a Silver or higher credential (indicative of career readiness); and percent passing ESS.

2019 Graduation Rate – On-time, four-year graduation rate for 2019.

Grade Level Less than Expected – Number of high school students whose spring 2019 coded grade level was less than expected based on their high school entry date.

Citizenship Factors – Percent of students with no Level 2 or 3 discipline referrals; % with out-of-school suspensions. Gr.9-11 US Government enrollment and % passing Civics assessment in that course.

AP, CTE, Dual Credit Courses (high schools) – Enrollments during 2018-19; percent of Advanced Placement (AP) tests with scores of 3 or higher; number of students who earned all required units in a state-recognized CTE program; and percent of dual credit students who successfully completed a course with a grade of C or higher.

Student Engagement – Participation in extracurricular activities (high school) during 2018-19 (as coded in PowerSchool). Percent of students reporting that they are satisfied with the learning environment at their school, based on the spring 2019 Climate Survey administered by the SCDE.

Readiness Metric – Elementary and Middle Schools – The stacked bars display, by grade, the percent of students that fell into each of four readiness levels in reading and math based on last spring’s results. The levels are Below Readiness, Approaches Readiness, Demonstrates Readiness, and Exceeds Readiness. Also displayed is an overall readiness percentage, which is the sum of the Demonstrates and Exceeds categories. Each student’s level combines available measures into one simple readiness metric to represent the degree to which the student is progressing as expected along the trajectory towards college and career readiness. The levels incorporate multiple measures where available, including FastBridge Reading and Math; NWEA MAP Reading and Math; SC READY ELA, Math, and Reading subtest; and Lexiles and Quantiles from multiple assessments. Use of multiple measures allows more than one opportunity for students to demonstrate readiness. When multiple measures are available, the result associated with the highest readiness level is assigned as the student’s overall readiness level.