

# D10 Middle School Way Ahead Community Meeting

We welcome your input:  
Comment cards  
Email: [capital@charleston.k12.sc.us](mailto:capital@charleston.k12.sc.us)

24 Feb 2022

# Agenda

- Mission
- Background
- School Updates
- Enrollment History and Projections
- CCSD D10 Charter School Status
- Decisions
  - School Configuration - 6<sup>th</sup> Grade Academy or Two Middle Schools
  - Location of New Facility
- Way Ahead

# Mission

- CCSD Board of Trustees approval of the long term middle school plan for West Ashley

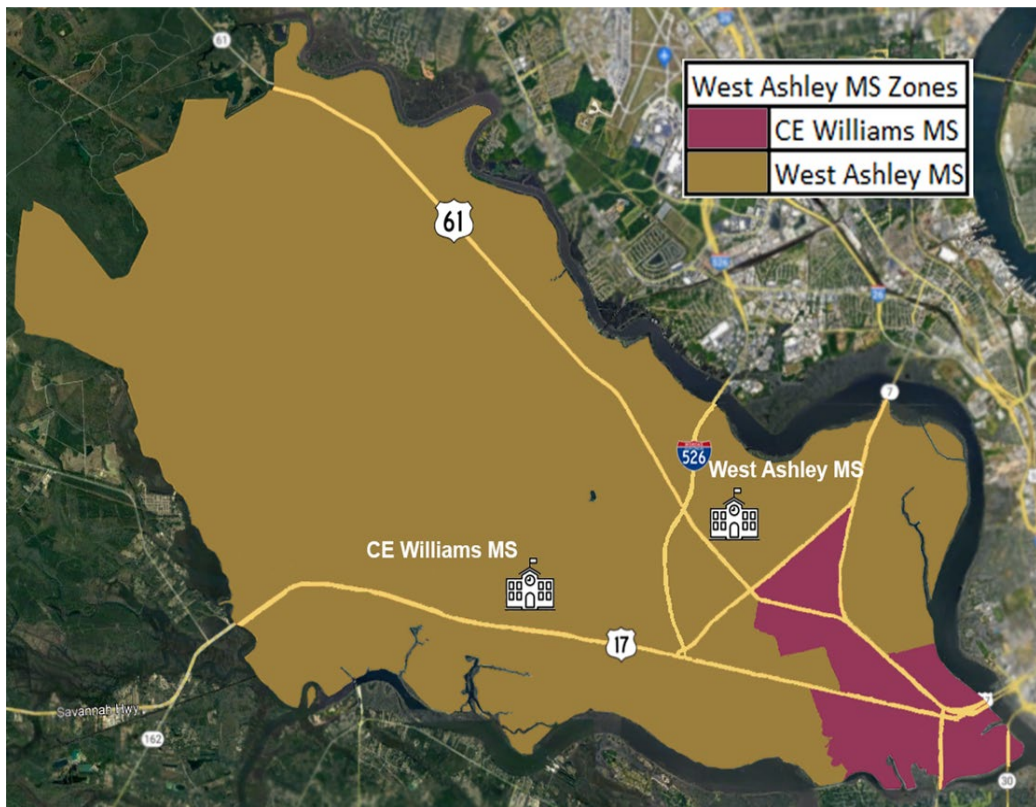
# Background

- 27 Jan 2020: CCSD Board of Trustees approved a “motion to merge District 10 (West Ashley) middle schools and locate 6th, 7th and 8th grade students at C.E. Williams Middle School beginning with the 2020-21 school year”
- 20 Apr 2020: CCSD Board of Trustees authorized the use of the West Ashley Middle School Campus for CE Williams 6<sup>th</sup> graders if necessary

# Background

- 22 Mar 2021: CCSD Board of Trustees approved the project, “Design, construct and equip new or expand middle school facilities” in wave 2 (2022-2025) of the Phase V Capital Building Program
- 19 Apr 2021: CCSD Board of Trustees approved the continuation of the current configuration for middle schools in D10, “until a committee can be formed during the 2021-2022 school year to discuss the future configuration for middle school scholars in D10”

# D10-West Ashley Middle School Ethnicity 2018-2019



CE Williams MS Zoned Ethnicity		
Ethnicity	Count	%
Black	170	54.14%
White	103	32.80%
Hispanic	24	7.64%
Other	17	5.41%
<b>Total</b>	<b>314</b>	<b>100%</b>

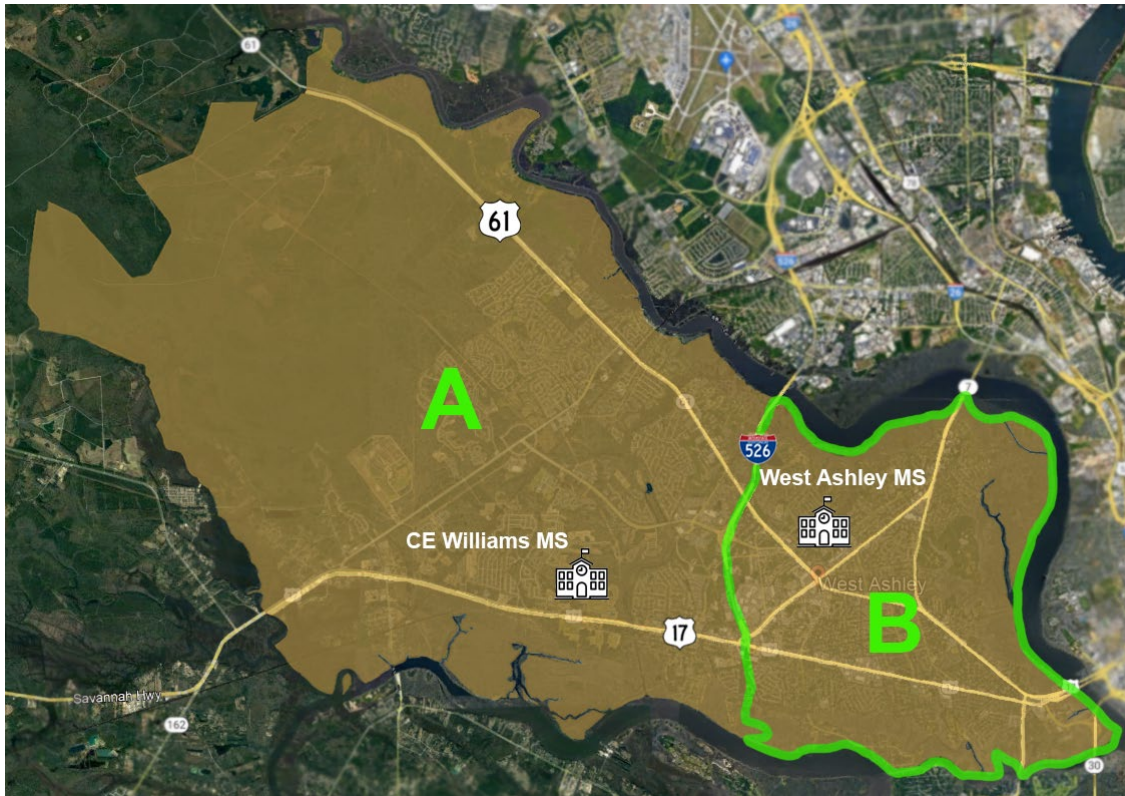
CE Williams MS Attending Ethnicity		
Ethnicity	Count	%
Black	250	38.46%
White	328	50.46%
Hispanic	37	5.69%
Other	35	5.38%
<b>Total</b>	<b>650</b>	<b>100%</b>

West Ashley MS Zoned Ethnicity		
Ethnicity	Count	%
White	907	58.93%
Black	472	30.67%
Hispanic	81	5.26%
Other	79	5.13%
<b>Total</b>	<b>1539</b>	<b>100%</b>

West Ashley MS Attending Ethnicity		
Ethnicity	Count	%
White	202	32.95%
Black	338	55.14%
Hispanic	41	6.69%
Other	32	5.22%
<b>Total</b>	<b>613</b>	<b>100%</b>

\*Ashley River Creative Arts attended CE Williams

# D10- New West Ashley Middle School Zones Option 1 (526 Split)



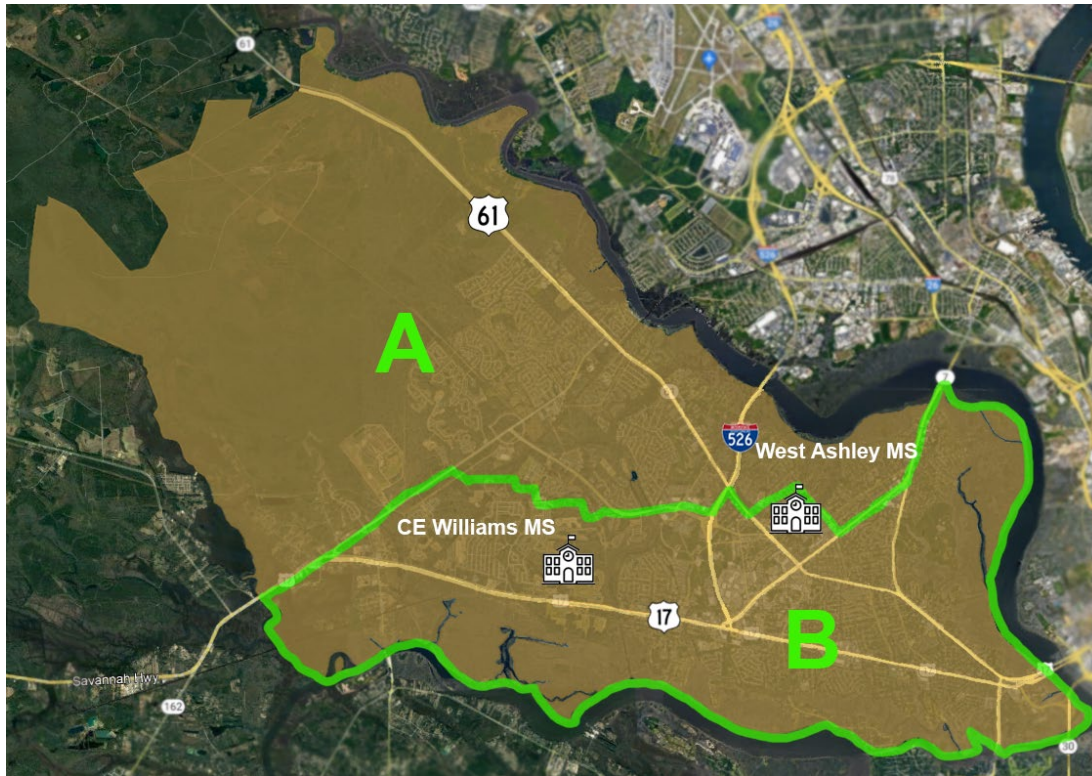
Option 1- A		
Ethnicity	Count	%
I	1	0.09%
P	5	0.46%
H	64	5.84%
M	52	4.74%
A	26	2.37%
B	270	24.64%
W	678	61.86%
<b>Total</b>	<b>1096</b>	<b>100%</b>

Option 1- B		
Ethnicity	Count	%
I	1	0.12%
P	4	0.47%
M	33	3.90%
H	61	7.20%
A	8	0.94%
B	421	49.70%
W	319	37.66%
<b>Total</b>	<b>847</b>	<b>100%</b>

Option 1-A	
Grade	Count
6	357
7	382
8	357
<b>Total</b>	<b>1096</b>

Option 1-B	
Grade	Count
6	309
7	264
8	274
<b>Total</b>	<b>847</b>

# D10- New West Ashley Middle School Zones Option 2 (DHE/SE and OE/ARCA/SASMS/Stono)



Option 2- A		
Ethnicity	Count	%
I	1	0.11%
P	4	0.46%
H	55	6.30%
M	40	4.58%
A	18	2.06%
B	210	24.05%
W	545	62.43%
<b>Total</b>	<b>873</b>	<b>100%</b>

Option 2- B		
Ethnicity	Count	%
I	1	0.09%
P	5	0.47%
H	70	6.54%
A	16	1.50%
M	45	4.21%
B	481	44.95%
W	452	42.24%
<b>Total</b>	<b>1070</b>	<b>100%</b>

Option 2-A	
Grade	Count
6	282
7	303
8	288
<b>Total</b>	<b>873</b>

Option 2-B	
Grade	Count
6	384
7	343
8	343
<b>Total</b>	<b>1070</b>



# School Updates

*CE Williams North (6<sup>th</sup> grade)*

*CE Williams South (7<sup>th</sup> and 8<sup>th</sup> grade)*

# Enrollment History and Projections

## *Elementary Schools*

D10 Elementary Schools							FUTURE PROJECTIONS ARE SUBJECT TO CHANGE YEARLY						
<b>Ashley River C. A.</b>	Bldg Capacity	FY2017	FY2018	FY2019	FY2020	FY2021	FY2022	FY2023	FY2024	FY2025	FY2026	FY2027	FY2028
Total	660	620	611	615	611	576	569	591	607	614	615	617	614
<b>Drayton Hall</b>	Bldg Capacity	FY2017	FY2018	FY2019	FY2020	FY2021	FY2022	FY2023	FY2024	FY2025	FY2026	FY2027	FY2028
Total	648	829	827	725	696	601	607	657	632	630	632	630	631
<b>Montessori Community</b>	Bldg Capacity	FY2017	FY2018	FY2019	FY2020	FY2021	FY2022	FY2023	FY2024	FY2025	FY2026	FY2027	FY2028
Total	300	274	272	279	283	273	266	282	282	282	282	282	282
<b>Oakland ES</b>	Bldg Capacity	FY2017	FY2018	FY2019	FY2020	FY2021	FY2022	FY2023	FY2024	FY2025	FY2026	FY2027	FY2028
Total	682	533	581	553	586	516	536	581	578	580	601	604	608
<b>Springfield ES</b>	Bldg Capacity	FY2017	FY2018	FY2019	FY2020	FY2021	FY2022	FY2023	FY2024	FY2025	FY2026	FY2027	FY2028
Total	748	623	683	644	659	632	627	665	646	649	657	651	643
<b>St. Andrews ES</b>	Bldg Capacity	FY2017	FY2018	FY2019	FY2020	FY2021	FY2022	FY2023	FY2024	FY2025	FY2026	FY2027	FY2028
Total	836	812	807	733	765	702	731	711	684	671	660	654	642
<b>Stono Park ES</b>	Bldg Capacity	FY2017	FY2018	FY2019	FY2020	FY2021	FY2022	FY2023	FY2024	FY2025	FY2026	FY2027	FY2028
Total	594	301	264	440	464	385	344	451	470	499	504	521	531
	Total ES Bldg Cap	FY2017	FY2018	FY2019	FY2020	FY2021	FY2022	FY2023	FY2024	FY2025	FY2026	FY2027	FY2028
<b>D10 Elementary Totals</b>	4,468	3,992	4,045	3,989	4,064	3,685	3,680	3,938	3,899	3,925	3,951	3,959	3,951

NOTE: PIC, Spec Ed, HS/EHS Enrollment Projections are not included in future forecasts.

# Enrollment History and Projections

## *Middle and High Schools*

D10 Middle Schools								FUTURE PROJECTIONS ARE SUBJECT TO CHANGE YEARLY					
West Ashley MS	Bldg Capacity	FY2017	FY2018	FY2019	FY2020	FY2021	FY2022	FY2023	FY2024	FY2025	FY2026	FY2027	FY2028
Total	901	611	530	605	607								
C.E. Williams MS	Bldg Capacity	FY2017	FY2018	FY2019	FY2020	FY2021	FY2022	FY2023	FY2024	FY2025	FY2026	FY2027	FY2028
Total	969	625	667	659	652								
CE Williams N (6th)	Bldg Capacity	FY2017	FY2018	FY2019	FY2020	FY2021	FY2022	FY2023	FY2024	FY2025	FY2026	FY2027	FY2028
Total	904					425	363	471	489	494	503	520	529
CE Williams S (7-8th)	Bldg Capacity	FY2017	FY2018	FY2019	FY2020	FY2021	FY2022	FY2023	FY2024	FY2025	FY2026	FY2027	FY2028
Total	969					818	835	839	861	863	889	891	907
	Total MS Bldg Cap	FY2017	FY2018	FY2019	FY2020	FY2021	FY2022	FY2023	FY2024	FY2025	FY2026	FY2027	FY2028
<b>D10 Middle Totals</b>	3,743	1,236	1,197	1,264	1,259	1,243	1,198	1,310	1,350	1,357	1,392	1,411	1,436
D10 High Schools								FUTURE PROJECTIONS ARE SUBJECT TO CHANGE YEARLY					
West Ashley HS	Bldg Capacity	FY2017	FY2018	FY2019	FY2020	FY2021	FY2022	FY2023	FY2024	FY2025	FY2026	FY2027	FY2028
Total	2,494	1,695	1,634	1,660	1,674	1,673	1,744	1,840	1,858	1,880	1,946	1,979	2,009
	Total HS Bldg Cap	FY2017	FY2018	FY2019	FY2020	FY2021	FY2022	FY2023	FY2024	FY2025	FY2026	FY2027	FY2028
<b>D10 High Totals</b>	2,494	1,695	1,634	1,660	1,674	1,673	1,744	1,840	1,858	1,880	1,946	1,979	2,009
								FUTURE PROJECTIONS ARE SUBJECT TO CHANGE YEARLY					
	Total D10 Bldg Cap	FY2017	FY2018	FY2019	FY2020	FY2021	FY2022	FY2023	FY2024	FY2025	FY2026	FY2027	FY2028
<b>D10 Totals</b>	10,705	6,923	6,876	6,913	6,997	6,601	6,622	7,088	7,107	7,162	7,289	7,349	7,396

# CCSD Charter School Status

- Orange Grove Middle
  - Currently in former Oakland Elementary
  - County Board Action: “Upon the earlier of 2025 or once West Ashley Middle School current campus being determined to be surplus enter into discussions to negotiate an MOU and Facilities Use Agreement with OGCES for middle school students....at no cost to the district”
- Carolina Voyager
  - Currently in former St. Andrews Middle until Aug 2023
  - Site for constructing a new school is not viable
- Pattison’s Academy for Comprehensive Education (PACE)
  - Currently in former St. Andrews Middle until Jun 2023

# Decision – School Configuration

## 6<sup>th</sup> Grade Academy or Two Middle Schools

- Factors to consider
  - 6<sup>th</sup> grade academy – effects of integrating 5 elementary schools at one site
  - Demographics – not practical to create two middle schools of relatively equal ratios

# Decision – Location of New Facility

## 6<sup>th</sup> Grade Academy

CONSTRUCTION PROJECT	BENEFITS	CHALLENGES
Replace CE Williams North	Prevents additional traffic in and around West Ashley campus	Limits Orange Grove option to sharing St. Andrews Campus
	Could allow consideration for Carolina Voyager and PACE to remain at St. Andrews Campus	
Construct on former St. Andrews MS Campus	Prevents additional traffic in and around West Ashley campus	Loss of Ravenel Stadium
	Could allow Orange Grove to utilize CE Williams North Campus	Will displace Carolina Voyager and PACE
Annex on CE Williams South Campus	Could allow Orange Grove to utilize CE Williams North Campus	Additional traffic in and around West Ashley campus
		No ability to increase capacity if West Ashley enrollment increases

# Decision – Location of New Facility

## Two Middle schools

CONSTRUCTION PROJECT	BENEFITS	CHALLENGES
Replace CE Williams North	Could allow consideration for Carolina Voyager and PACE to remain at St. Andrews Campus	Limits Orange Grove option to sharing St. Andrews Campus
Construct on former St. Andrews MS Campus	Could allow Orange Grove to utilize CE Williams North Campus	Loss of Ravenel Stadium
		Will displace Carolina Voyager and PACE

# Way Ahead

## *School Configuration and Location of New Facility*

- 14 Mar: Publish Public Input Received at Community Meetings
- Late Mar: Community Meeting (if necessary)
- 25 Apr: Approval at County Board Committee of the Whole and Board Meeting



# Questions?

We welcome your input:

Comment cards

Email: [capital@charleston.k12.sc.us](mailto:capital@charleston.k12.sc.us)

Brief will be available at:

[www.ccsdschools.com/Page/1480](http://www.ccsdschools.com/Page/1480)