

New District 3 Early Learning Center

Community Meeting

12 January 2023

The mission of CCSD is to educate and support every child in achieving college, career, and citizenship readiness.



Pillar I: RIGOROUS GRADE-LEVEL INSTRUCTION



Pillar II: HIGH QUALITY TEACHERS/LEADERS



Pillar III: WRAP-AROUND SERVICES

Vision 2027: By June 2027, All Students will Read on Grade Level by Fifth Grade
–2027 Fifth Grade Cohort–

CCSD BOARD GOALS

Supported by our pillars



Goal 1: Literacy

The percentage of Black/African American and Hispanic 5th grade students reading on grade level will increase from 25.5% in July 2022 to 60.7% in July 2027 as measured by SC READY ELA.

Goal 2: Algebra Readiness & Achievement

The percentage of all CCSD students enrolled in 8th Grade achieving C or higher on the Algebra I End-of-Course exam by the end of 8th grade will increase from 24.9% in May 2022 to 60.3% in May 2027.

Goal 3: College and Career Readiness

The percentage of students in the 4-year cohort who graduate college and/or career ready will increase from 67.7% in August 2022 to 86.2% in August 2027 as measured by SC College and Career Readiness Indicators.

Vision 2027: By June 2027, All Students will Read on Grade Level by Fifth Grade

–2027 Fifth Grade Cohort–

Sales Tax Referendum Summary



Board of Trustees

The Board of Trustees approved funded and unfunded projects

Charleston Voters

Voters passed the 2nd extension of the Capital Improvements Educational Sales and Use tax (Phase V 2023-2028)

Board of Trustees

Project waves were set by the Board
D3 Early Education Center is in Wave 2

Project Scope



SCOPE: Design, construct and equip a **new** Early Education and Family Development Center at the James Island Middle School Campus

BUDGET: \$38.5M

ACREAGE: 7.88

COMPLETION: July 2026

KNOWN:

- The new building will include parent training and community resource spaces, a full administration suite, nurse's clinic, specialized fine arts rooms, and a cafeteria.
- Construction Management Firm

BROWNSTONE

To Be Determined:

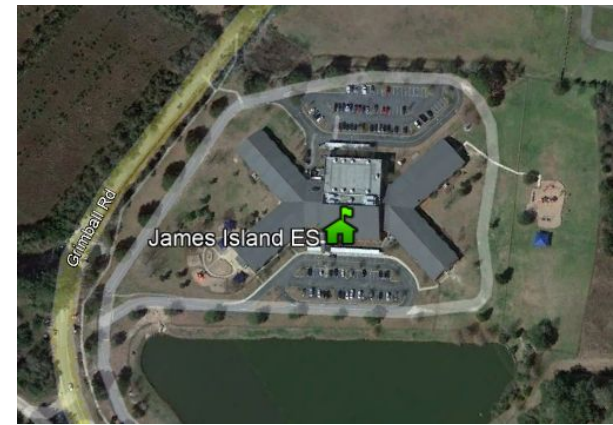
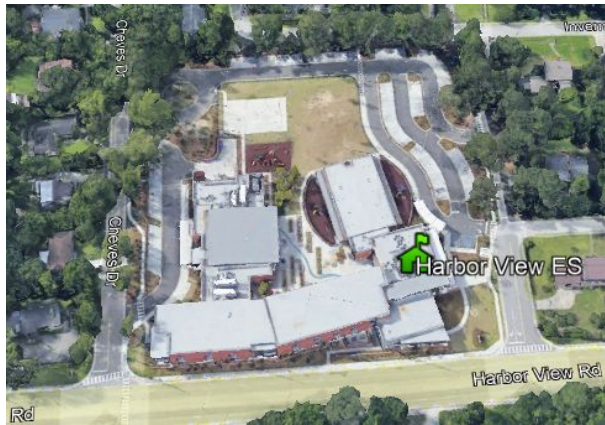
- The programming of the school - What will the grade configurations in this new building to best serve the students on James Island?
- Family Development Center Configuration

Project Update

- Constant Interacting with CCSD Early Childhood Dept.
- March 2022 – Feasibility Study Conducted
- April 2022 – Building Capacity Evaluation
- May 2022 – D3 School Walk-through (e.g. HVES, JIES, SPES)
- October 2022 – D3 Constituent Board Update
- December 2022 – Cabinet Update
- January 2023 – D3 Community Meeting
- July 2023 - Solicit an Architect/Engineer Firm - Underway Now
- October 2023 – Design Start
- October 2024 – Solicit a General Contractor Firm
- January 2025 – Construction Start
- July 2026 – Project Completion
- August 2026 – Move-In Ready

D3 School Walk-Through RECAP

- Held at Harbor View ES, Stiles Point ES, and James Island ES



- **Key Factors:** Stiles Point's Building Capacity, Harbor View's Parent Loop, James Island ES's higher number of Pre-K Classrooms (no Pre-K waitlist)

(Site Visit: Friday, May 13, 2022 with Principals)

Current D3 ES Configuration

Any option needs to take into account how much classroom space could be gained in the D3 elementary schools to which this center will be zone for.

D3 Elementary Schools (CD)

Harbor View ES (38 sts)	James Island ES (55 sts)	Stiles Point ES (40 sts)	CD Waitlisted (51 sts)
2 CD rooms	4 CD rooms 2 HS rooms	2 CD rooms	0 CD rooms

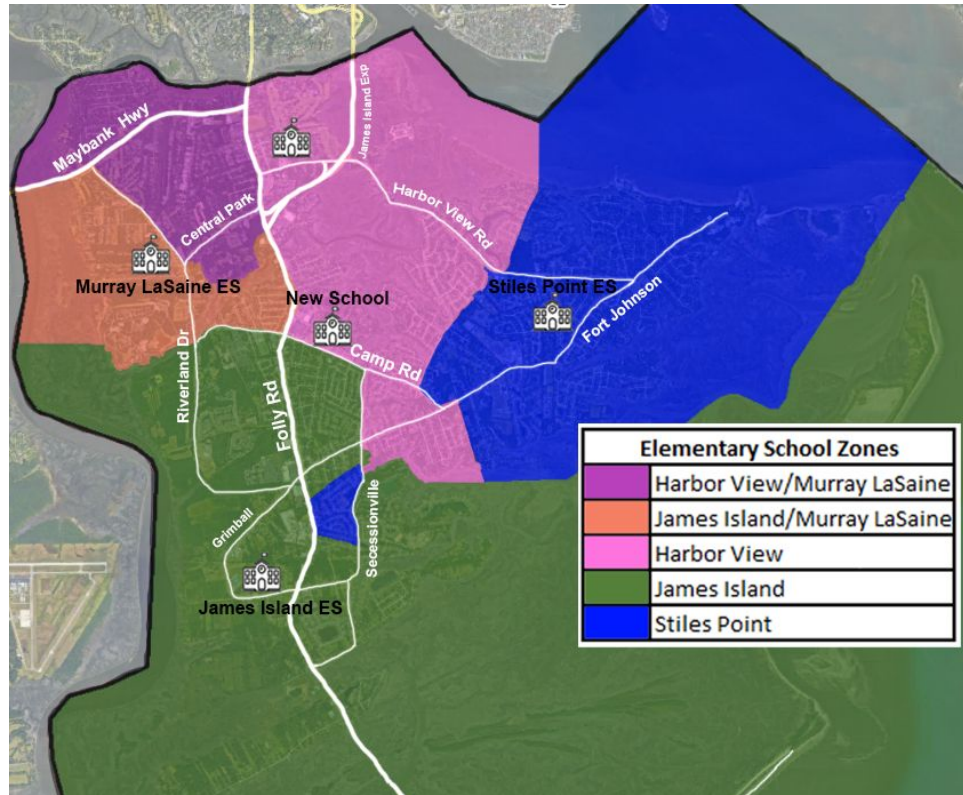
Total: 10 Classrooms
Total: 184 Students

D3 Elementary Schools (CD-K)

Harbor View ES (142 sts)	James Island ES (133 sts)	Stiles Point ES (165 sts)	CD Waitlisted (51 sts)
2 CD rooms 5 K rooms	4 CD rooms 2 HS rooms 4 K rooms	2 CD rooms 5 K rooms	0 CD rooms

Total: 24 Classrooms
Total: 491 Students

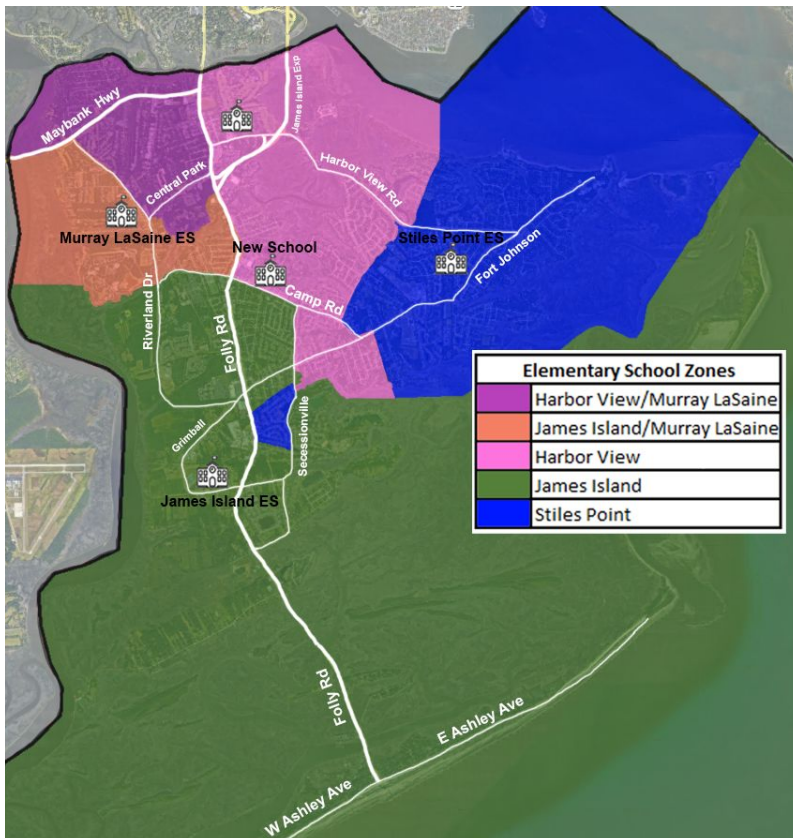
Live-In Attendance Zone FY22



School	Grade Config	Total Enrollment	School Type	Matched	Unmatched	Out of County	Total Live-In (Grade Config)	Live In, Attend In	Live Out, Attend In	Live In, Attend Out
Harbor View ES	K4-5	631	Neighborhood	630	0	1	795	576	55	219
James Island ES	K4-5	532	Neighborhood	525	2	5	672	452	78	220
Murray LaSaine ES	K3-8	354	Montessori/Partial Magnet	354	0	0	(569)	212	(142)	(357)
Stiles Point ES	K4-5	782	Neighborhood	781	1	0	847	745	36	102
District 9 ES Totals		2,299		2,290	3	6	2,314	1,985	169	541

Universal Pre-K

In efforts to project the needs for universal Pre-K, current Kindergarten enrollment numbers are used. The assumption is that our Kindergarten students would most likely attend Pre-Kindergarten if it was offered.



FY23 10-Day Actuals

James Island Early Education Center - D3

District 3 Kindergarten enrollment: **304**

Harbor View ES - 106

James Island ES - 75

Stiles Point ES - 123

Future Projections

	FY24	FY25	FY26	FY27	FY28
HVES (K)	99	96	91	95	97
SPES (K)	120	118	115	109	107
JIES (K)	86	81	78	75	78
Total:	305	295	284	279	282

Universal Pre-K Grade Configuration (Option 1)

	Number of rooms (New School)			Total Rooms
	Pre-Kindergarten (CD, Headstart, PIC)	Early Head Start	Kindergarten	
480 students	16	2	6	24

Notes:

- Assumption = 16 Pre-K Classrooms [*Current is 10 Pre-K Classrooms*]
- CCSD is incorporating Early Head Start (e.g. Mary Ford ES)
- Early Head Start is Infants - 3 year olds
- 6 Classroom Spaces Available for Kindergarten from other D3 Schools

Expanding Pre-K Grade Configuration (Option 2)

	Number of rooms (New School)			Total Rooms
	Pre-Kindergarten (CD, Headstart, PIC)	Early Head Start	Kindergarten	
500 students	12	2	10	24

Notes:

- Assumption = 12 Pre-K Classrooms [*Current is 10 Pre-K Classrooms*]
- CCSD is incorporating Early Head Start (e.g. Mary Ford ES)
- 10 Classrooms Spaces Available for Kindergarten from other D3 Schools

Which Kindergarten Class(es) Move to New Center?

<u>James Island ES</u> (75 K-Students)
Kindergarten Classrooms Required
4

<u>Stiles Point</u> (123 K-Students)
Kindergarten Classrooms Required
5

<u>Harbor View ES</u> (106 K-Students)
Kindergarten Classrooms Required
5

Notes:

- Assumption: Select to move all Kindergarten from one school (no dividing grade levels within a single school)
- 6 to 10 Kindergarten Classrooms Available in New Early Ed. Center

Building Capacity Change

<u>James Island ES</u> (Pre-K and Kindergarten to New Center)		<u>Stiles Point ES</u> (Pre-K and Kindergarten to New Center)		<u>Harbor View ES</u> (Pre-K and Kindergarten to New Center)	
Before	After	Before	After	Before	After
88%	77%	110%	93%	94%	79%

Notes:

- The greatest capacity change is Stiles Point ES at 17% difference
- 2nd largest capacity change is Harbor View ES at 15% difference
- 3rd largest capacity change is James Island ES at 11% difference
- Stiles Point is the only ES school with trailers

Proposed Grade Configuration

1. Establish a single attendance zone for D3 Pre-K
2. Murray LaSaine remains the Montessori Choice School for the D3 Island
3. Early Head Start through Kindergarten at new D3 Early Education Center
 - (Option 1)
 - a. All Stiles Point Kindergarten
 - b. HVES & JIES Kindergarten remain at home school
 - c. Define an attendance zone for D3 Kindergarten
 - (Option 2)
 - d. All Stiles Point & Harbor View Kindergarten
 - e. JIES Kindergarten remain at home school
4. Family Development Center included and working on programming

Proposed Grade Configuration

- Benefits

- All CD plus current waitlisted
- Improves building capacity in all D3 ES
- Early Head Start included
- D3 Pre-K students attend a new school
- Prevent attendance zone inequities for Pre-K
- On track with original budget
- Stiles Point trailers removed

- Challenges

- Kindergarten classes will be split between the center and home schools
- Families with students in Pre-K and Kindergarten will have multiple stops

Next Steps

- 1st Qtr. 2023: County Board approval on grade configuration
- 1st Qtr. 2023: Hire Architect Firm

Questions?

Your input is essential

Community Feedback:

Email us at

Capital@charleston.k12.sc.us

Comment Cards available
(in person at Community Meeting)

<https://www.ccsdschools.com/Page/7325>