

# New District 9 Elementary School

## Community Meeting

June 30, 2022

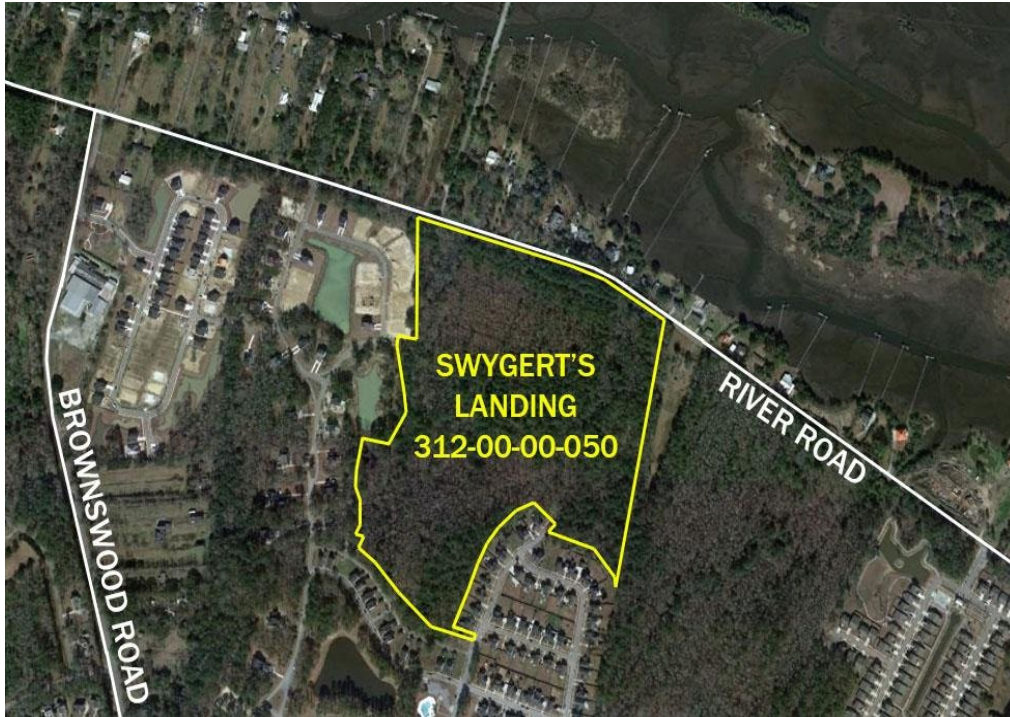
# AGENDA

- 2021 Community Meeting Recap
- New School Site
- Live-In Attendance Zone
- Proposed Grade Configuration
- Project Scope and Update
- Next Step

# 2021 COMMUNITY MEETING RECAP

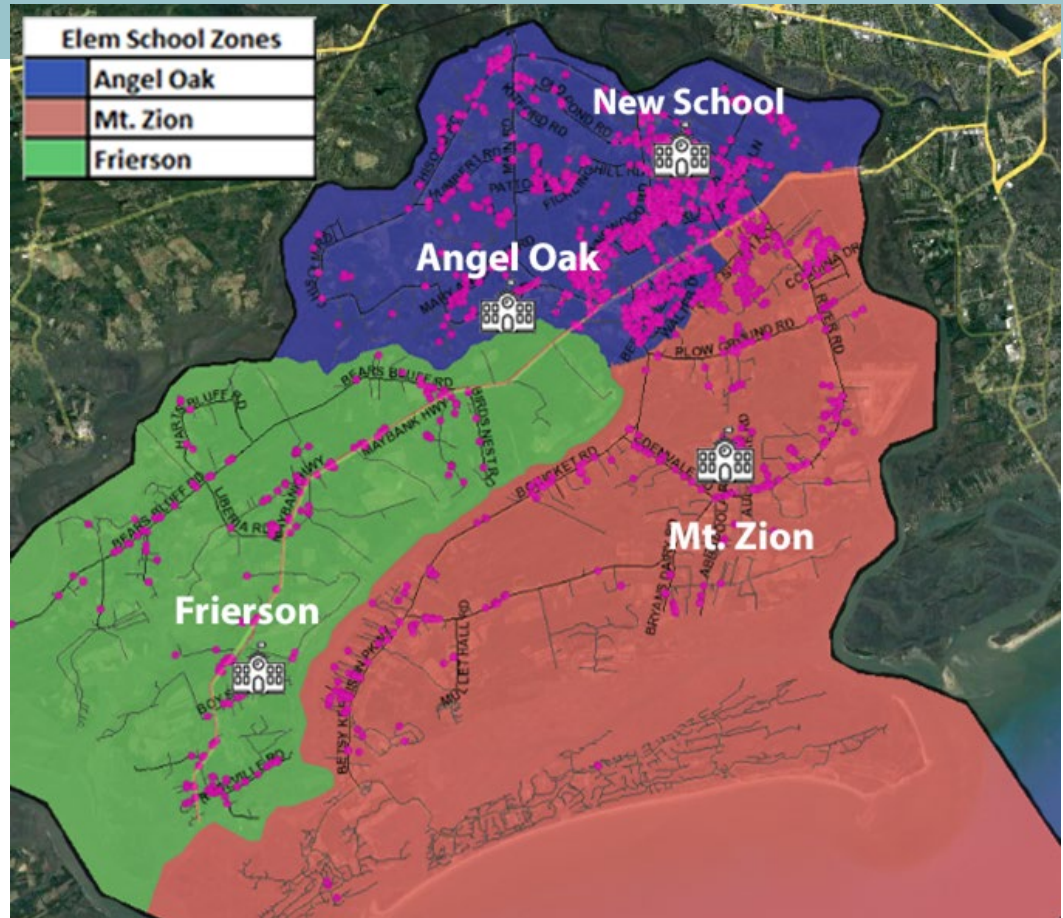
- Held at Mt Zion and Angel Oak in Sep
- Reviewed sales tax referendum, attendance zones, demographics, site options, project scope
- Next steps were site determination and attendance zone
- Community feedback

# NEW SCHOOL SITE



- Total Acres 55.08  
31.90 highland  
23.18 wetlands/buffer
- Zoned  
Conservation District and  
Neighborhood District
- Due Diligence  
Surveys  
Wetland  
Grand Trees  
Traffic Analysis

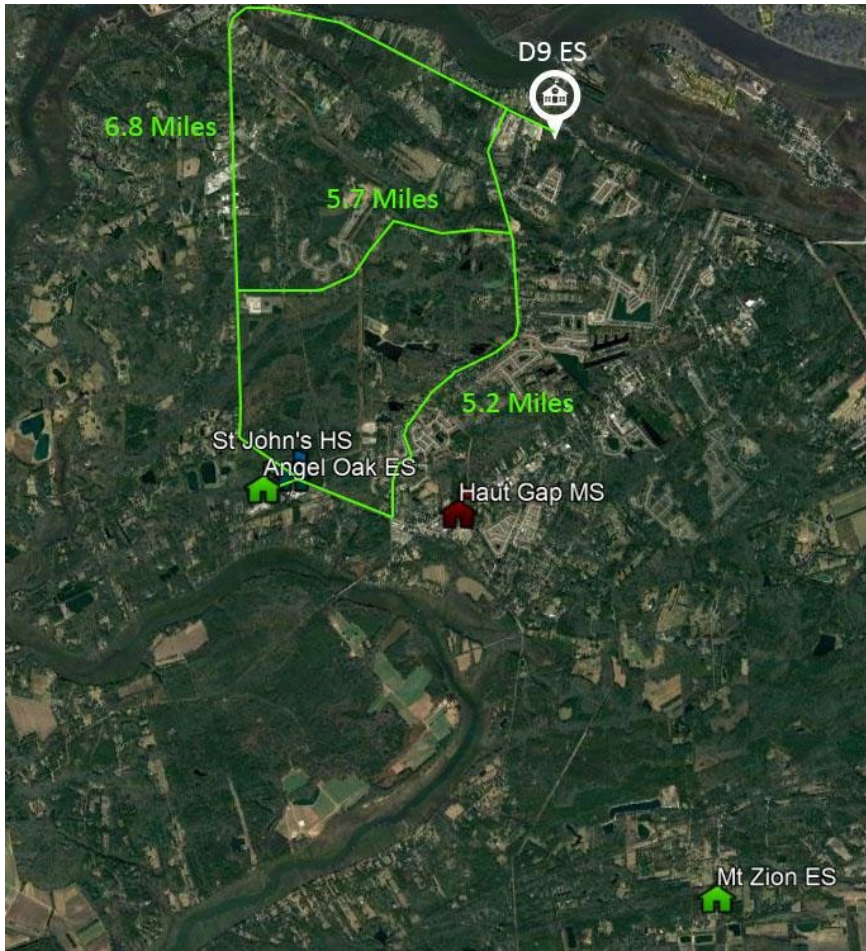
# LIVE-IN ATTENDANCE ZONE (PreK-5)



School	Grade Config	Total Enrollment	School Type	Matched	Unmatched	Out of County	Total Live-In (Grade Config)	Live In, Attend In	Live Out, Attend In	Live In, Attend Out
Angel Oak ES	K4-5	699	Neighborhood	698	1	0	876	660	38	216
Edith L. Frierson ES	K4-5	150	Neighborhood Montessori	149	0	1	115	78	72	37
Mt. Zion ES	K4-2	245	Neighborhood	243	2	0	327	212	31	115
<b>District 9 ES Totals</b>		<b>1,094</b>		<b>1,090</b>	<b>3</b>	<b>1</b>	<b>1,318</b>	<b>950</b>	<b>141</b>	<b>368</b>



# TRAFFIC IMPACTS

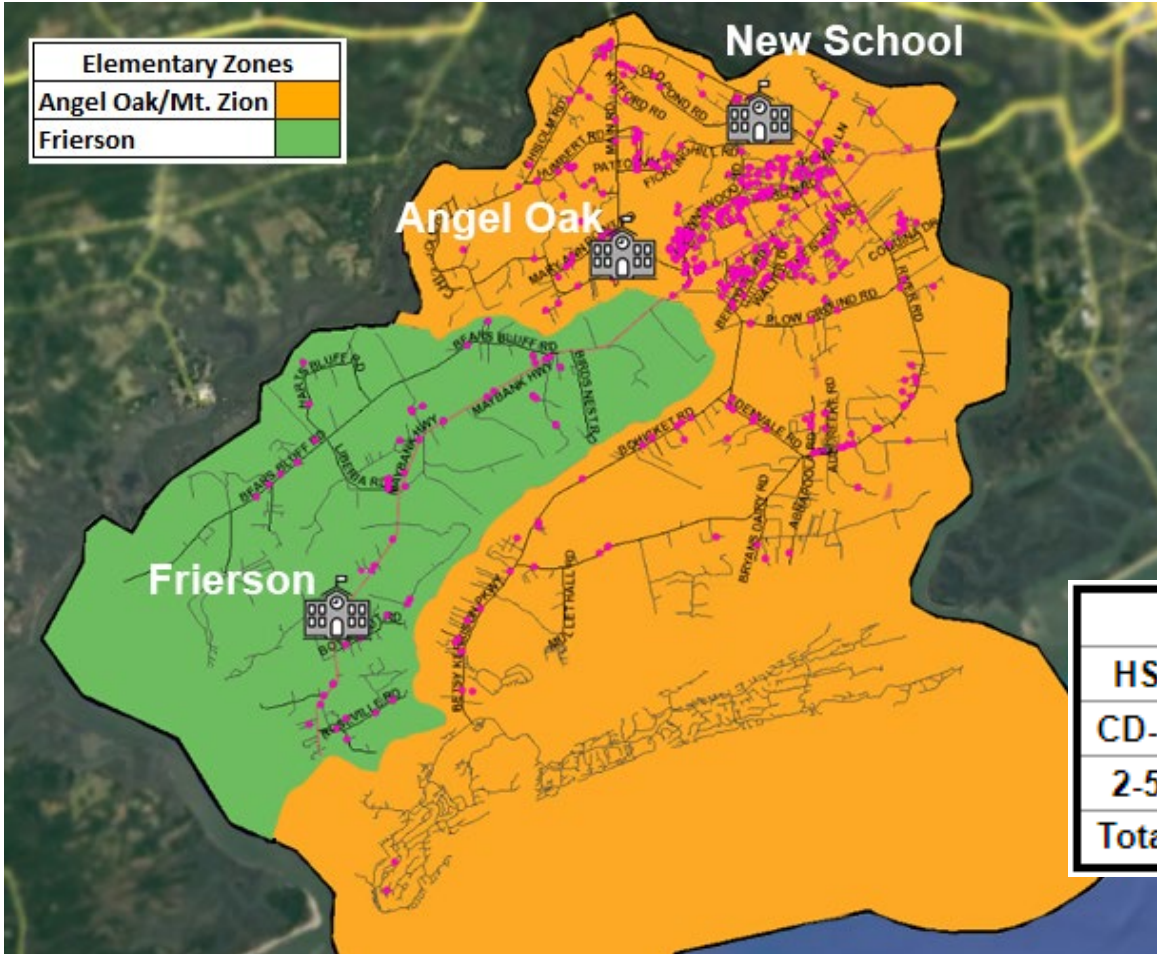


- Preliminary Traffic Study completed
- Various routes
- SCDOT input required
- Roundabout on River Road

# PROPOSED GRADE CONFIGURATION

- Establish a single attendance zone for D9 elementary
- Head Start through grade 1 at Angel Oak ES and becomes the primary school
  - Existing trailers removed
- Grades 2-5 at new elementary school
- Seek to create a family center at Mt. Zion ES
  - Existing trailers removed

# ANGEL OAK (CD-1) AND NEW SCHOOL (2-5)



## FY22 45-Day Count (Actual Students Attending)

Angel Oak (CD-1): 406 students

New School (2-5): 486 students

## Future Projections

	FY23	FY24	FY25	FY26	FY27	FY28
HS	34	34	34	34	34	34
CD-1	453	452	441	438	433	422
2-5	580	642	675	689	683	671
<b>Total</b>	<b>1067</b>	<b>1128</b>	<b>1150</b>	<b>1161</b>	<b>1150</b>	<b>1127</b>



# PROPOSED GRADE CONFIGURATION

- Benefits
  - Use of early education concept
  - All D9 children get a new school
  - No inequities in attendance zones
  - No new school delays due to establish attendance zones
- Challenges
  - Families may have children in both schools rather than just one school

# PROJECT SCOPE

Construction Management:



Total Budget: \$41M

Design Start: April 2022

Project Completed: July 2024



\*Rendering represents design intent and does not represent the final exterior finish

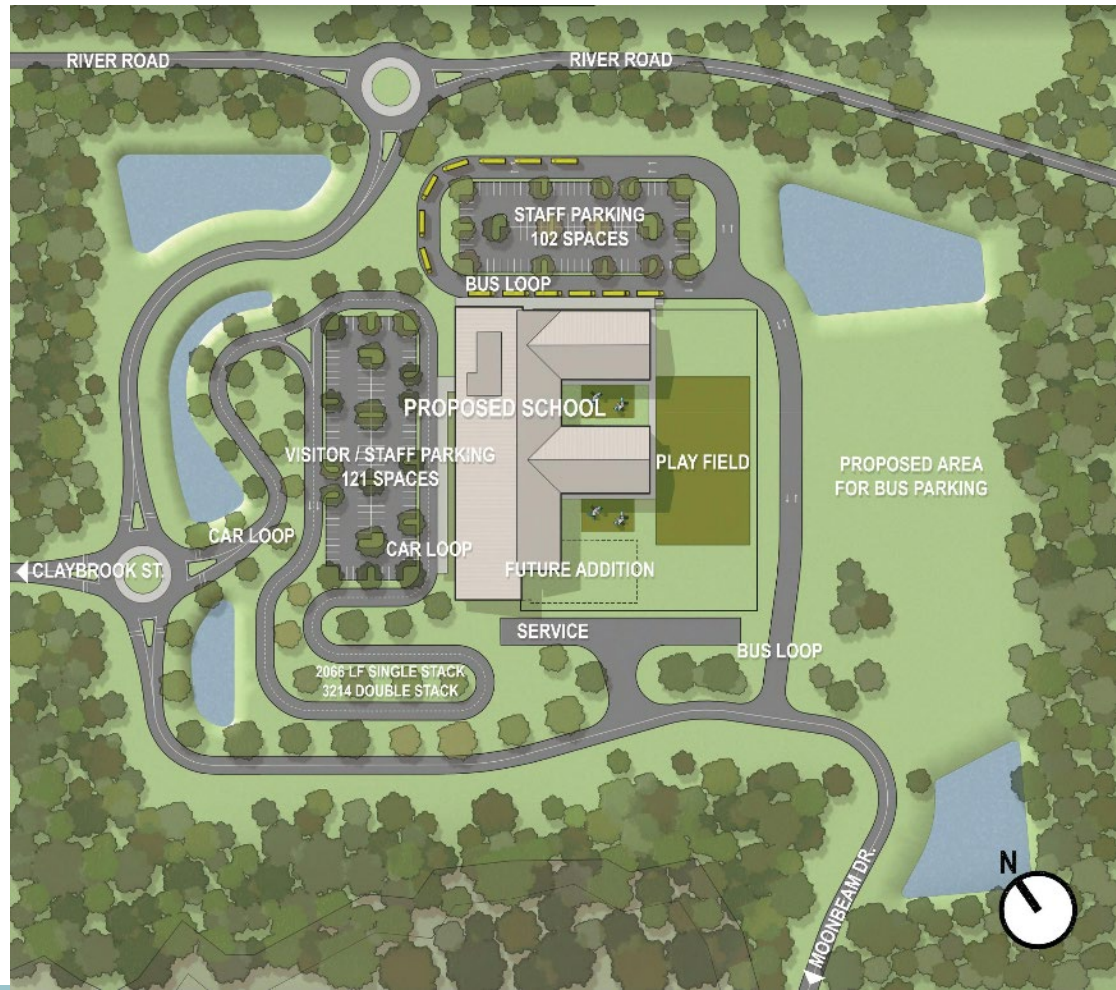
- Design, construct, and equip a new 700 student (900 core) elementary school [2-Story]
- The configuration of the new school will follow current CCSD design requirements and education specifications

# PROJECT UPDATE

- Hired General Contractors
  - Thompson Turner Construction & Construction Dynamics, Inc.
- Hired Architect Firms
  - Quackenbush Architects & Clancy and Wells Architects
- Design Build Method of Construction
- Construction Start - March 2023 (*target date*)
- Coordination with City of Charleston & JI Task Force
- Currently designing to include building layout, surveying, SCDOT traffic studies, wetland permitting, and Geotechnical Report

# PROJECT UPDATE

- Improved traffic flow
- Protection of grand trees
- Greenspace
- Improved stormwater
- Secured playground areas
- Neighborhood connection
- Separate car, bus, and fire department access as required





# PROJECT UPDATE

School Site  
Integration



# NEXT STEP

- Aug: County Board approval on configuration

# QUESTIONS?