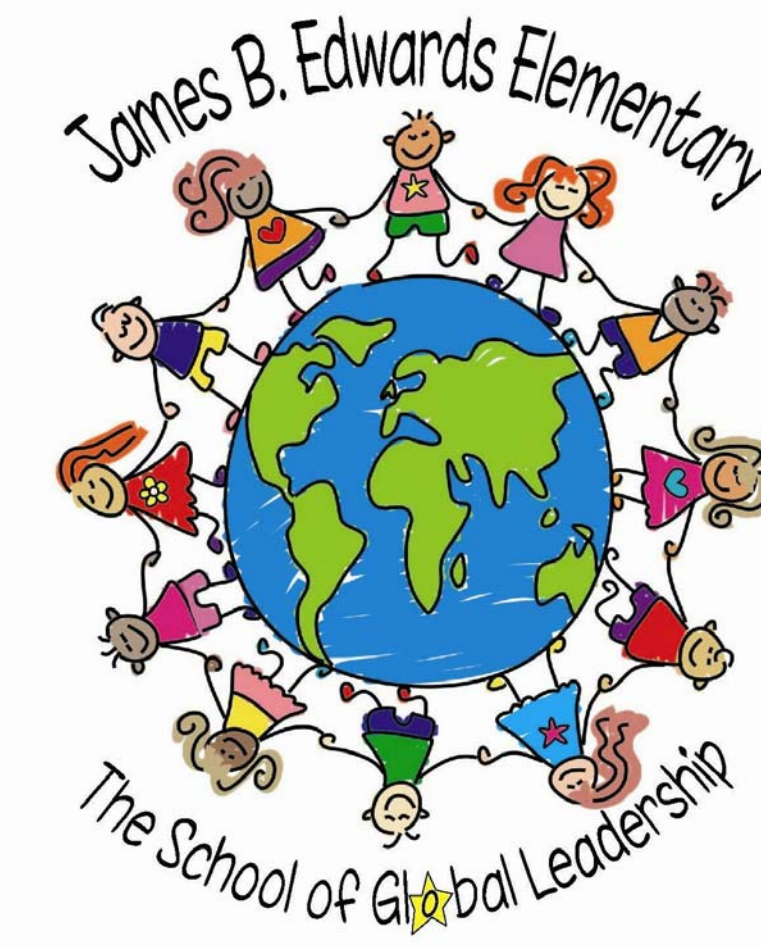


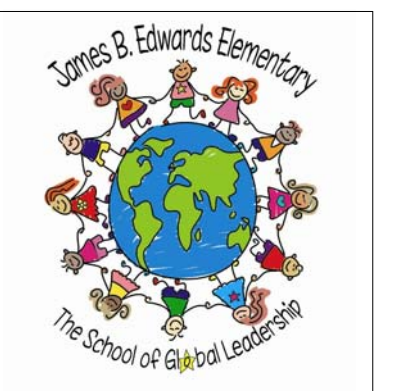
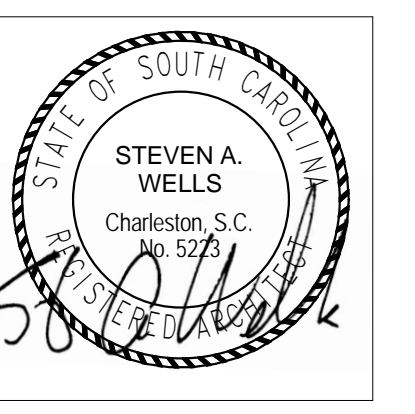
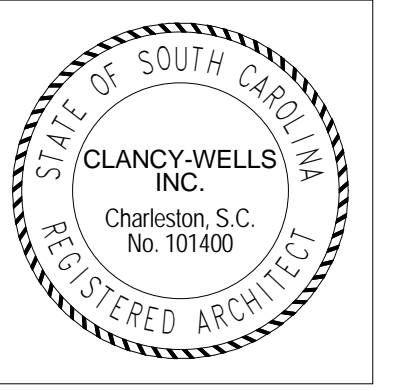
# HARDWARE REPLACEMENT at JAMES B EDWARDS ELEMENTARY SHOOOL

855 VON KOLNITZ ROAD  
MOUNT PLEASANT, SOUTH CAROLINA

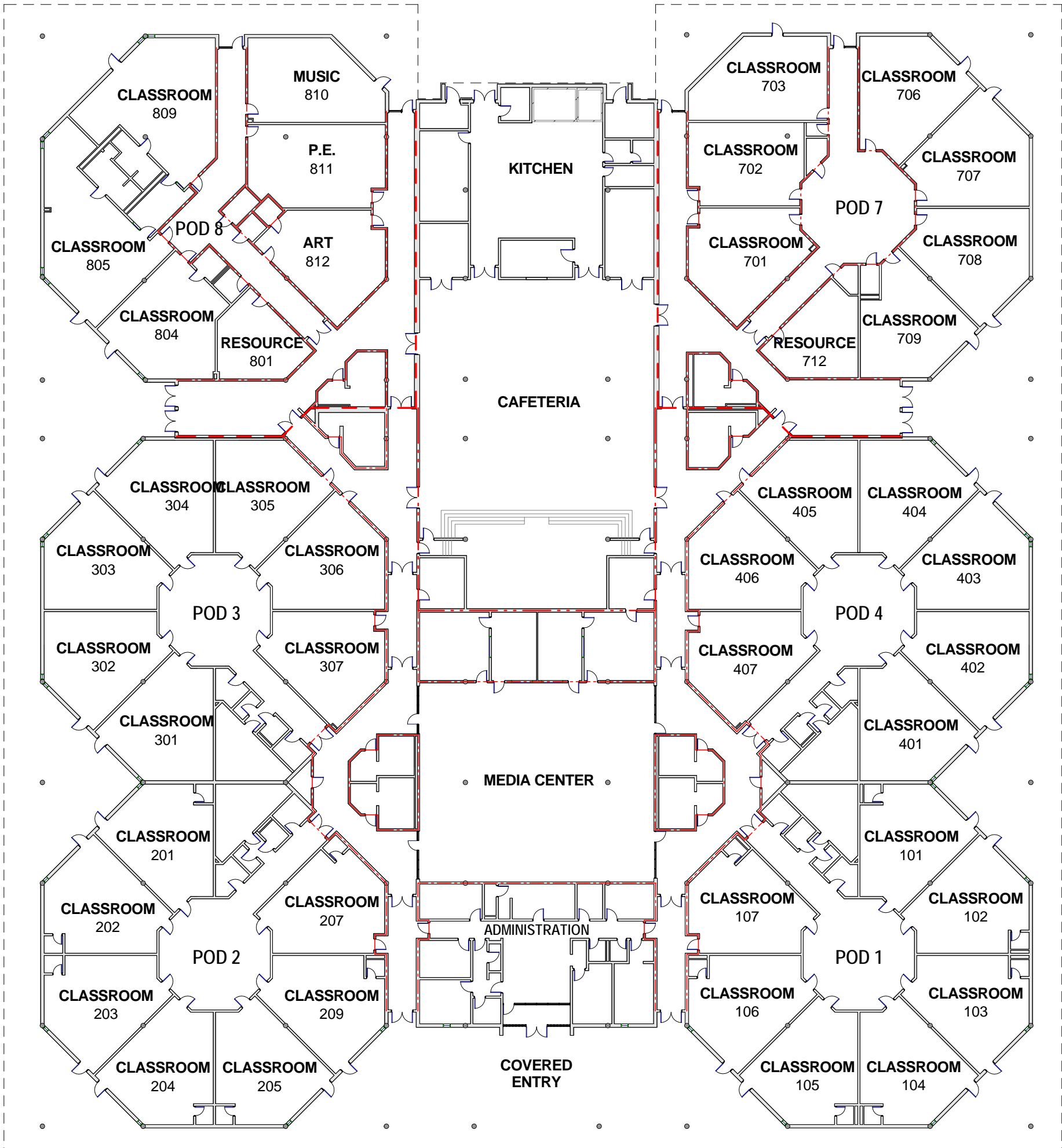


Charleston > excellence is our standard  
County SCHOOL DISTRICT

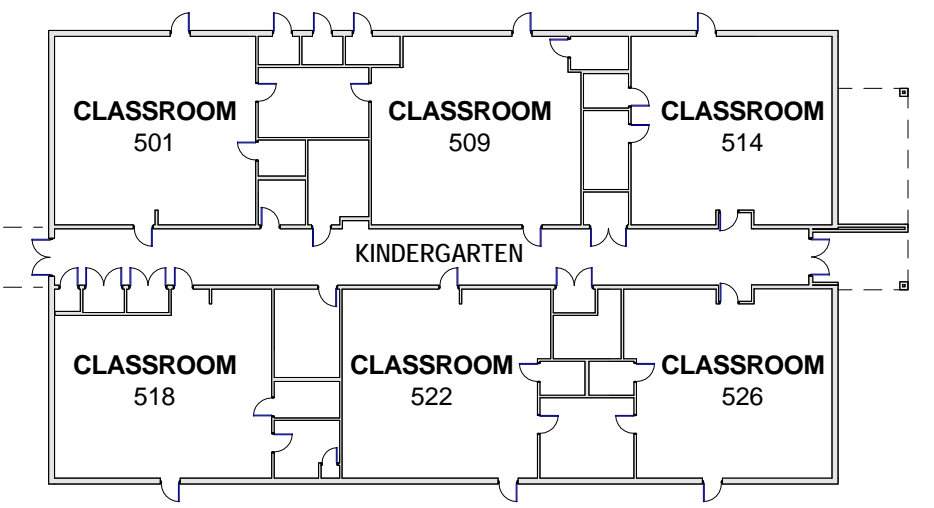
**Clancy+Wells**  
313 East Bay Street  
Charleston, SC 29401  
Clancy 843-708-3252  
Wells 843-327-8107  
www.Clancy+Wells.com



HARDWARE REPLACEMENT at  
**J B EDWARDS ELEMENTARY SCHOOL**  
855 Von Kolnitz Road  
Mount Pleasant, South Carolina



J.B. EDWARDS ELEMENTARY - 1st-5th GRADE



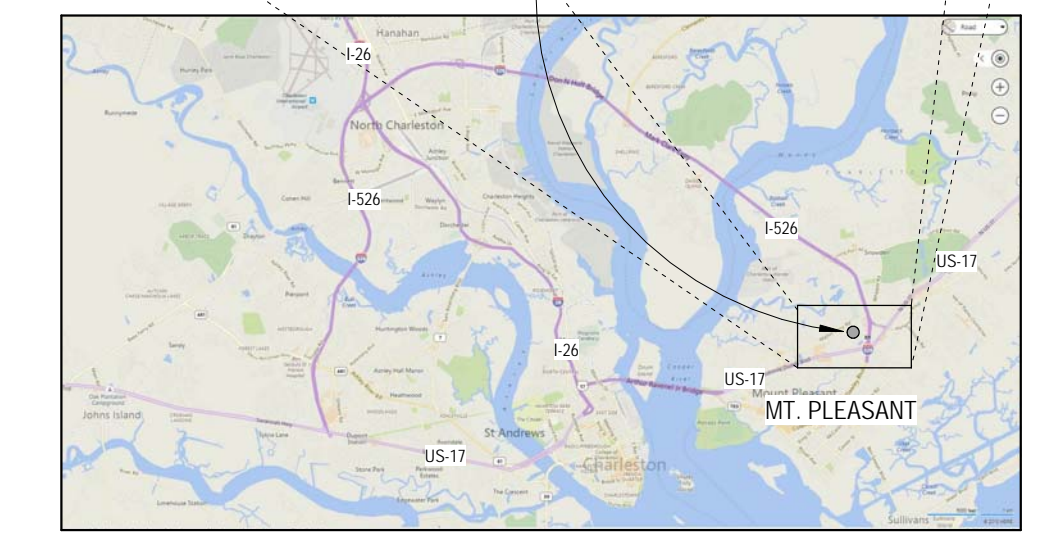
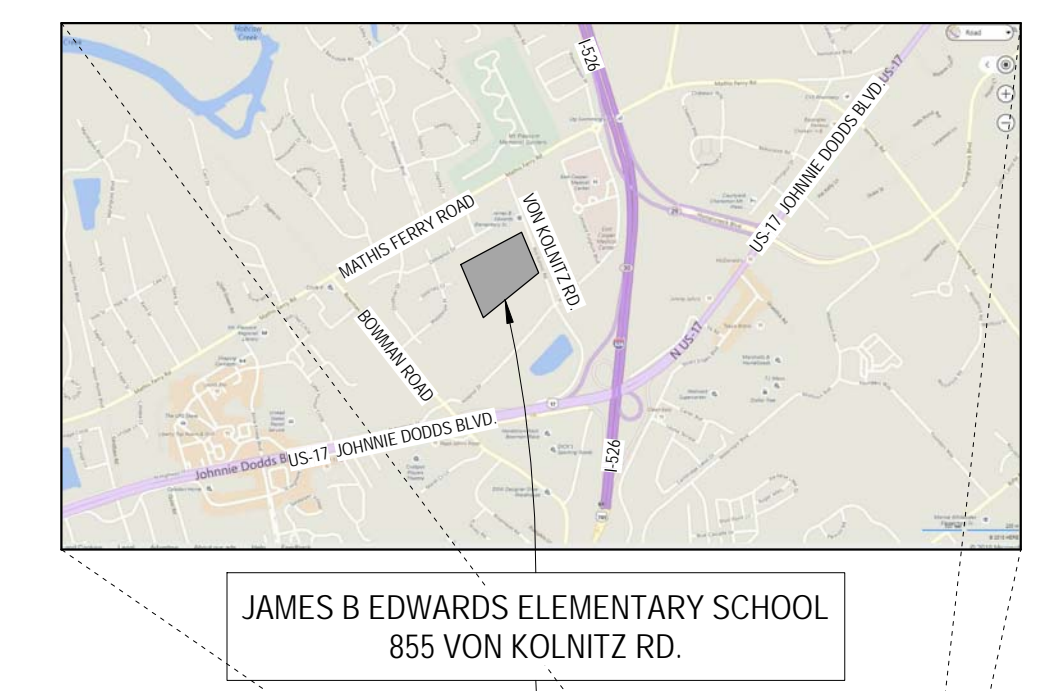
J.B. EDWARDS ELEMENTARY - KINDERGARTEN ANNEX

**PROJECT DATA**

**PROJECT NAME:** HARDWARE REPLACEMENT at JAMES B. EDWARDS ELEMENTARY SCHOOL  
**PROJECT ADDRESS:** 855 VON KOLNITZ ROAD, MOUNT PLEASANT, SC 29464  
**USE:** EDUCATION - GROUP E  
**PROJECT TYPE:** MAINTENANCE - HARDWARE / DOOR REPLACEMENT  
**GOVERNING CODES:** ALL WORK SHALL BE IN COMPLIANCE WITH, BUT NOT LIMITED TO, THE REQUIREMENTS OF THE FOLLOWING AND ANY OTHER STATE OR LOCAL CODES HAVING JURISDICTION:  
 2015 INTERNATIONAL BUILDING CODE (IBC)  
 2015 INTERNATIONAL EXISTING BUILDING CODE (IEBC)  
 2015 INTERNATIONAL PLUMBING CODE (IPC)  
 2014 NATIONAL ELECTRICAL CODE (NFPA 70)  
 2015 INTERNATIONAL MECHANICAL CODE (IMC)  
 2015 INTERNATIONAL FIRE CODE (IFC)  
 2015 INTERNATIONAL FUEL GAS CODE (IFGC)  
 2009 INTERNATIONAL ENERGY CONSERVATION CODE (IECC)  
 ICC/ANSI A117.1 - 2017

**OWNER:** COMPANY ADDRESS: CHARLESTON COUNTY SCHOOL DISTRICT, 75 CALHOUN STREET, CHARLESTON, SC 29401  
**PROGRAM MANAGER:** CONTACT COMPANY ADDRESS: SHANE LEE, CUMMING, 3820 FABER PLACE, NORTH CHARLESTON, SC 29405, 843-697-1924, slee@ccorpusa.com  
**ARCHITECT:** CONTACT COMPANY ADDRESS: STEVE WELLS, CLANCY+WELLS, 313 EAST BAY ST., CHARLESTON, SC 29401, 843-327-8017, swells@clancy-wells.com  
**HARDWARE CONSULTANT:** CONTACT COMPANY ADDRESS: ALAN MEYER, ASSA ABLBY, 104 ROLLING CREEK TRAIL, WILLIAMSTON, SC 29697, 864-760-9366, alan.meyer@assaabloy.com

**LOCATOR MAPS**



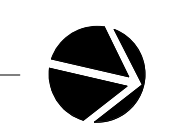
**DRAWING INDEX**

G-1	GENERAL INFORMATION
A-1	DOOR REPLACEMENT LAYOUT
A-2	HARDWARE REPLACEMENT PLAN
A-3	DOOR SCHEDULE

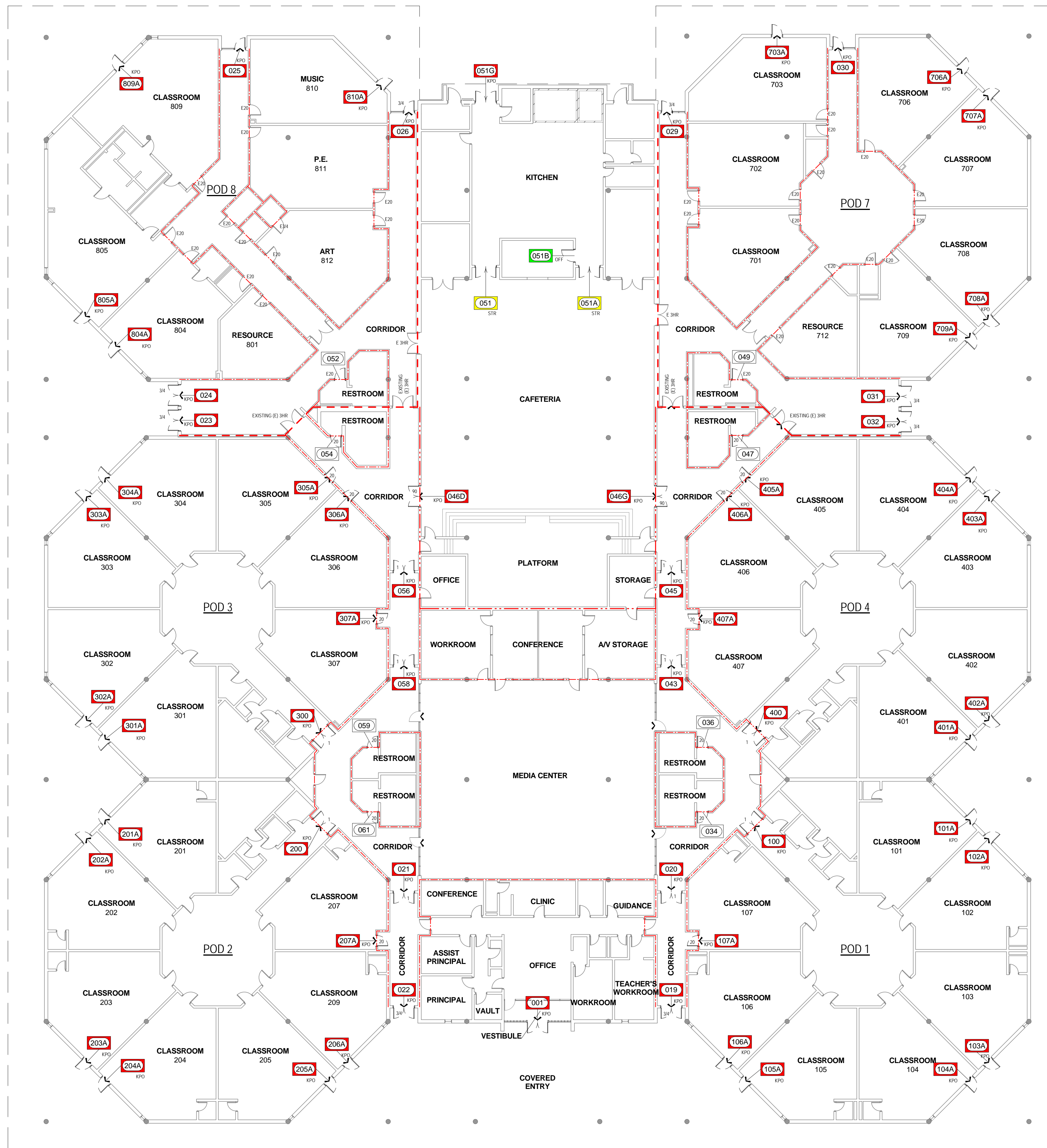
Revisions		
#	Date	Description

Sheet Title  
**GENERAL INFORMATION**  
THE DRAWINGS AND/OR DOCUMENTATION HEREIN, WHETHER PRINTED OR ELECTRONIC FORMAT, IS THE EXCLUSIVE PROPERTY OF CLANCY+WELLS, INC. AND MAY NOT BE REPRODUCED IN ANY FORM WITHOUT WRITTEN PERMISSION.

Date  
**12 Feb., 2018**  
Project #  
**17101.A**  
Sheet #  
**G-1**  
CONSTRUCTION DOCUMENTS





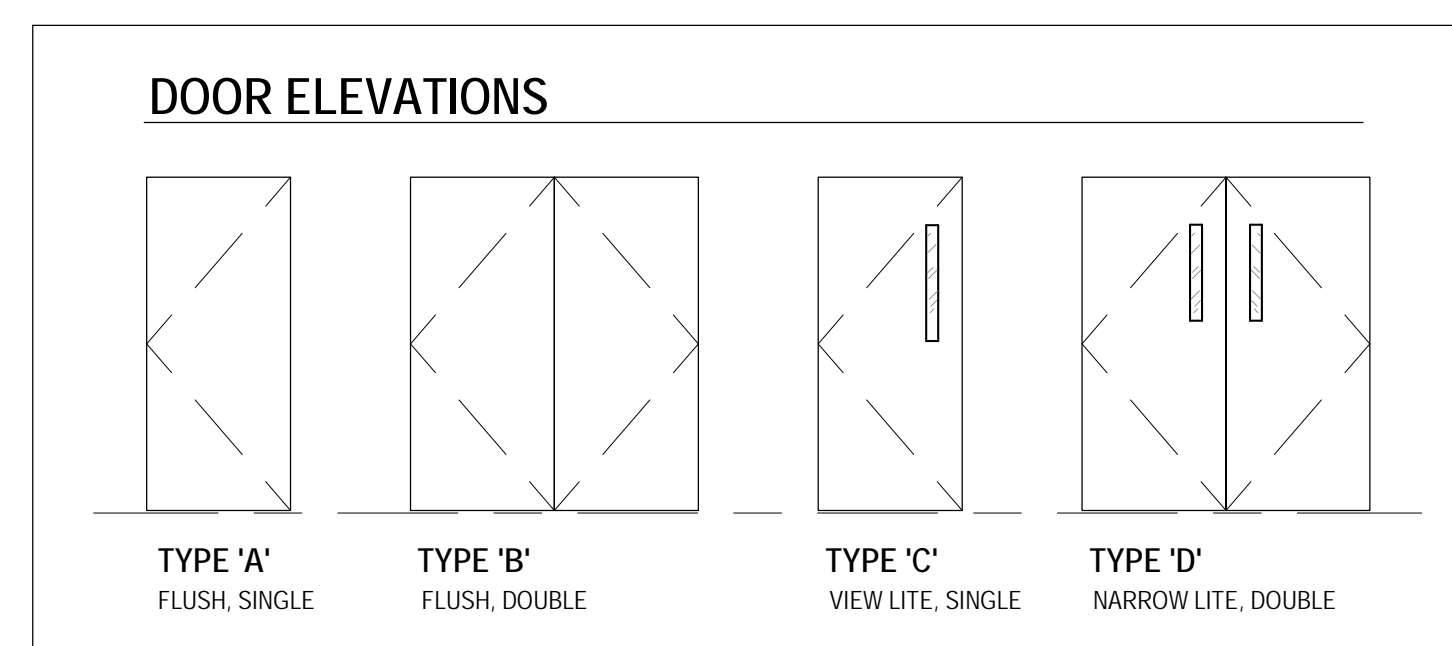


**DOOR REMOVAL LOCATIONS**

XXX KPO	DOOR # - REPLACE DOOR: KEYED PER OWNER INSTRUCTIONS	61
XXX STR	DOOR # - REPLACE DOOR: STOREROOM LOCKSET	2
XXX OFF	DOOR # - REPLACE DOOR: OFFICE LOCKSET	1
XXX	DOOR # - REPLACE DOOR: NO LOCKSET	8

**DOOR REPLACEMENT SCHEDULE**

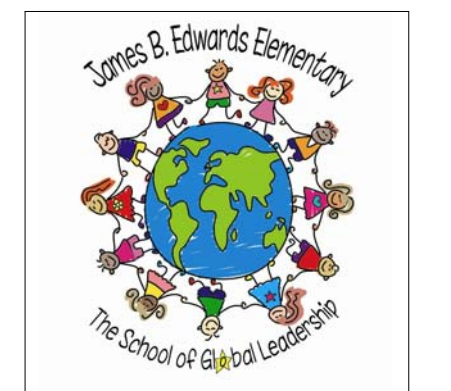
Door Number	Door Type	Doors			Material	Finish	Hardware Set	Fire Rating	Comments
		Width	Hgt	Thk					
001	D	6'-0"	9'-0"	1 3/4"	METAL, INSUL	PAINT	1		
019	D	6'-0"	7'-0"	1 3/4"	METAL, INSUL	PAINT	9	3/4 HR	
020	B	6'-0"	7'-0"	1 3/4"	METAL, INSUL	PAINT	10	1 HR	
021	D	6'-0"	7'-0"	1 3/4"	METAL, INSUL	PAINT	10	1 HR	
022	D	6'-0"	7'-0"	1 3/4"	METAL, INSUL	PAINT	9	3/4 HR	
023	D	6'-0"	7'-0"	1 3/4"	METAL, INSUL	PAINT	12	3/4 HR	
024	D	6'-0"	7'-0"	1 3/4"	METAL, INSUL	PAINT	14	3/4 HR	
025	C	3'-0"	7'-0"	1 3/4"	METAL, INSUL	PAINT	16A		
026	C	3'-0"	7'-0"	1 3/4"	METAL, INSUL	PAINT	16	3/4 HR	
029	C	3'-0"	7'-0"	1 3/4"	METAL, INSUL	PAINT	16	3/4 HR	
030	C	3'-0"	7'-0"	1 3/4"	METAL, INSUL	PAINT	16A		
031	D	6'-0"	7'-0"	1 3/4"	METAL, INSUL	PAINT	14	3/4 HR	
032	D	6'-0"	7'-0"	1 3/4"	METAL, INSUL	PAINT	13	3/4 HR	
034	A	3'-0"	7'-0"	1 3/4"	METAL, INSUL	PAINT	26	20 min.	
036	A	3'-0"	7'-0"	1 3/4"	METAL, INSUL	PAINT	26	20 min.	
043	D	6'-0"	7'-0"	1 3/4"	METAL, INSUL	PAINT	23	1 HR	
045	D	6'-0"	7'-0"	1 3/4"	METAL, INSUL	PAINT	23	1 HR	
046D	D	6'-0"	7'-0"	1 3/4"	METAL, INSUL	PAINT	23A	1-1/2 HR	
046G	D	6'-0"	7'-0"	1 3/4"	METAL, INSUL	PAINT	23A	1-1/2 HR	
047	A	3'-0"	7'-0"	1 3/4"	METAL, INSUL	PAINT	26	20 min.	
049	A	3'-0"	7'-0"	1 3/4"	METAL, INSUL	PAINT	26	20 min.	
051	B	6'-0"	7'-0"	1 3/4"	METAL, INSUL	PAINT	32		
051A	B	6'-0"	7'-0"	1 3/4"	METAL, INSUL	PAINT	32		
051B	A	3'-0"	7'-0"	1 3/4"	METAL, INSUL	PAINT	33		
051G	B	6'-0"	7'-0"	1 3/4"	METAL, INSUL	PAINT	35		
052	A	3'-0"	7'-0"	1 3/4"	METAL, INSUL	PAINT	26	20 min.	
054	A	3'-0"	7'-0"	1 3/4"	METAL, INSUL	PAINT	26	20 min.	
056	D	6'-0"	7'-0"	1 3/4"	METAL, INSUL	PAINT	23	1 HR	
058	D	6'-0"	7'-0"	1 3/4"	METAL, INSUL	PAINT	23	1 HR	
059	A	3'-0"	7'-0"	1 3/4"	METAL, INSUL	PAINT	26	20 min.	
061	A	3'-0"	7'-0"	1 3/4"	METAL, INSUL	PAINT	26	20 min.	
100	D	6'-0"	7'-0"	1 3/4"	METAL, INSUL	PAINT	22	1 HR	
101A	C	3'-0"	7'-0"	1 3/4"	METAL, INSUL	PAINT	11		
102A	C	3'-0"	7'-0"	1 3/4"	METAL, INSUL	PAINT	11		
103A	C	3'-0"	7'-0"	1 3/4"	METAL, INSUL	PAINT	11		
104A	C	3'-0"	7'-0"	1 3/4"	METAL, INSUL	PAINT	11		
105A	C	3'-0"	7'-0"	1 3/4"	METAL, INSUL	PAINT	11		
106A	C	3'-0"	7'-0"	1 3/4"	METAL, INSUL	PAINT	11		
107A	C	3'-0"	7'-0"	1 3/4"	METAL, INSUL	PAINT	18	3/4 HR	
200	D	6'-0"	7'-0"	1 3/4"	METAL, INSUL	PAINT	23	1 HR	
201A	C	3'-0"	7'-0"	1 3/4"	METAL, INSUL	PAINT	11		
202A	C	3'-0"	7'-0"	1 3/4"	METAL, INSUL	PAINT	11		
203A	C	3'-0"	7'-0"	1 3/4"	METAL, INSUL	PAINT	11		
204A	C	3'-0"	7'-0"	1 3/4"	METAL, INSUL	PAINT	11		
205A	C	3'-0"	7'-0"	1 3/4"	METAL, INSUL	PAINT	11		
206A	C	3'-0"	7'-0"	1 3/4"	METAL, INSUL	PAINT	11		
207A	C	3'-0"	7'-0"	1 3/4"	METAL, INSUL	PAINT	27	3/4 HR	
300	D	6'-0"	7'-0"	1 3/4"	METAL, INSUL	PAINT	23	1 HR	
301A	C	3'-0"	7'-0"	1 3/4"	METAL, INSUL	PAINT	11		
302A	C	3'-0"	7'-0"	1 3/4"	METAL, INSUL	PAINT	11		
303A	C	3'-0"	7'-0"	1 3/4"	METAL, INSUL	PAINT	11		
304A	C	3'-0"	7'-0"	1 3/4"	METAL, INSUL	PAINT	11		
305A	C	3'-0"	7'-0"	1 3/4"	METAL, INSUL	PAINT	27	3/4 HR	
306A	C	3'-0"	7'-0"	1 3/4"	METAL, INSUL	PAINT	27	3/4 HR	
307A	C	3'-0"	7'-0"	1 3/4"	METAL, INSUL	PAINT	27	3/4 HR	
400	D	6'-0"	7'-0"	1 3/4"	METAL, INSUL	PAINT	23	1 HR	
401A	C	3'-0"	7'-0"	1 3/4"	METAL, INSUL	PAINT	11		
402A	C	3'-0"	7'-0"	1 3/4"	METAL, INSUL	PAINT	11		
403A	C	3'-0"	7'-0"	1 3/4"	METAL, INSUL	PAINT	11		
404A	C	3'-0"	7'-0"	1 3/4"	METAL, INSUL	PAINT	11		
405A	C	3'-0"	7'-0"	1 3/4"	METAL, INSUL	PAINT	27	3/4 HR	
406A	C	3'-0"	7'-0"	1 3/4"	METAL, INSUL	PAINT	27	3/4 HR	
407A	C	3'-0"	7'-0"	1 3/4"	METAL, INSUL	PAINT	27	3/4 HR	
703A	C	3'-0"	7'-0"	1 3/4"	METAL, INSUL	PAINT	15		
706A	C	3'-0"	7'-0"	1 3/4"	METAL, INSUL	PAINT	15		
707A	C	3'-0"	7'-0"	1 3/4"	METAL, INSUL	PAINT	15		
708A	C	3'-0"	7'-0"	1 3/4"	METAL, INSUL	PAINT	15		
709A	C	3'-0"	7'-0"	1 3/4"	METAL, INSUL	PAINT	15		
804A	C	3'-0"	7'-0"	1 3/4"	METAL, INSUL	PAINT	15		
805A	C	3'-0"	7'-0"	1 3/4"	METAL, INSUL	PAINT	15		
809A	C	3'-0"	7'-0"	1 3/4"	METAL, INSUL	PAINT	15		
810A	C	3'-0"	7'-0"	1 3/4"	METAL, INSUL	PAINT	15		



J.B. EDWARDS ELEMENTARY - MAIN BUILDING  
1/16" = 1'

**1 DOOR REPLACEMENT PLAN**  
1/16" = 1'-0"

**Clancy+Wells**  
313 East Bay Street  
Charleston, SC 29401  
Clancy 843-708-3252  
Wells 843-327-8107  
www.Clancy+Wells.com



**HARDWARE REPLACEMENT at**  
**J B EDWARDS ELEMENTARY SCHOOL**  
855 Von Kolnitz Road  
Mount Pleasant, South Carolina

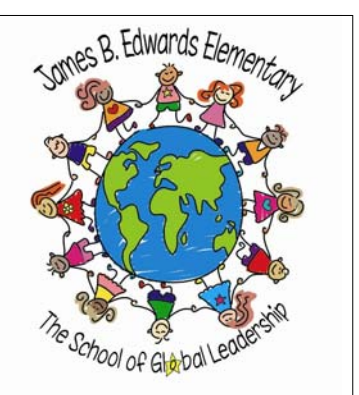
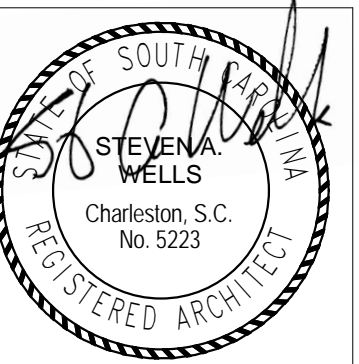
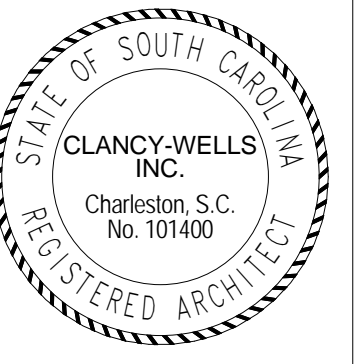
Revisions

#	Date	Description

Sheet Title  
**DOOR REPLACEMENT LOCATIONS**  
THE DRAWINGS AND/OR DOCUMENTATION HEREIN, WHETHER PRINTED OR ELECTRONIC FORMAT IS THE EXCLUSIVE PROPERTY OF CLANCY+WELLS, INC. AND MAY NOT BE REPRODUCED IN ANY FORM WITHOUT WRITTEN PERMISSION

Date  
**12 Feb., 2018**  
Project #  
**17101.A**  
Sheet #  
**A-1**  
CONSTRUCTION DOCUMENTS





**HARDWARE REPLACEMENT at  
J B EDWARDS ELEMENTARY SCHOOL**  
855 Von Kolnitz Road  
Mount Pleasant, South Carolina

Revisions

#	Date	Description

Sheet Title  
**HARDWARE REPLACEMENT PLAN**

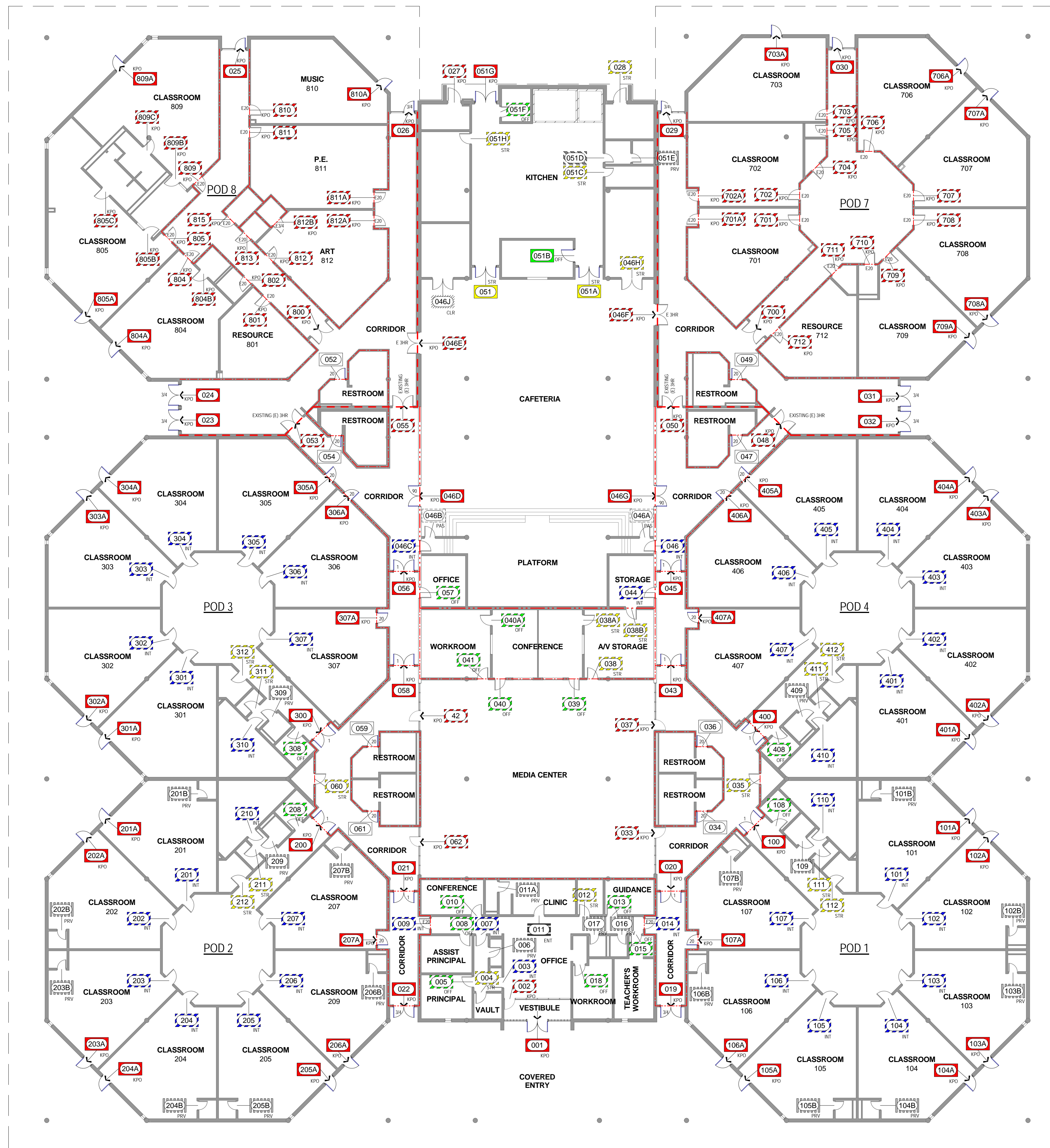
THE DRAWINGS AND/OR DOCUMENTATION HEREIN, WHETHER PRINTED OR ELECTRONIC FORMAT, IS THE EXCLUSIVE PROPERTY OF CLANCY+WELLS, INC. AND MAY NOT BE REPRODUCED IN ANY FORM WITHOUT WRITTEN PERMISSION.

Date  
**12 Feb., 2018**

Project #  
**17101.A**

Sheet #  
**A-2**

CONSTRUCTION DOCUMENTS



J.B. EDWARDS ELEMENTARY - MAIN BUILDING  
1/16" = 1'

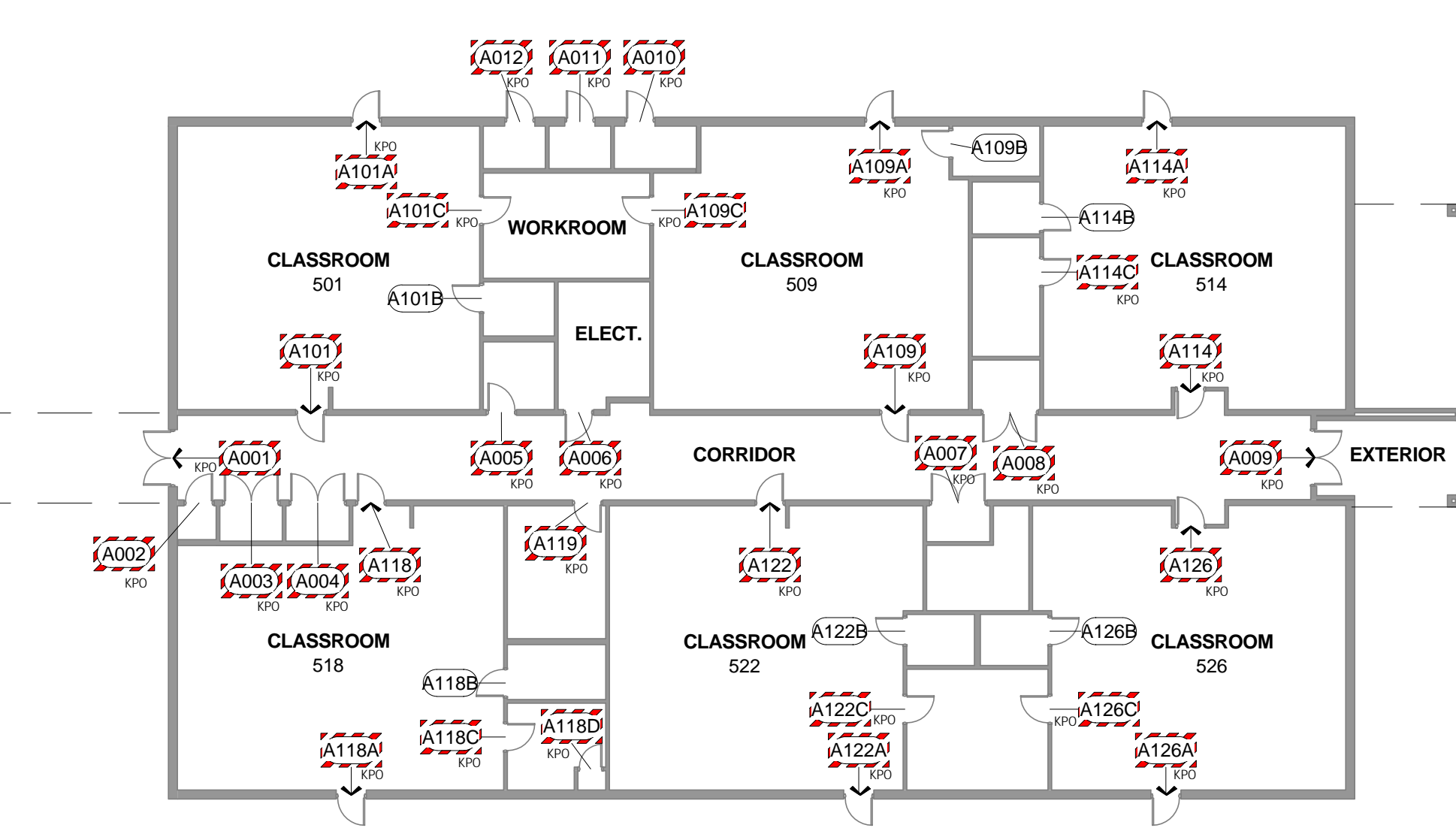
**WALL LEGEND**

	EXISTING WALL
	EXISTING WALL: 1-HR RATING
	EXISTING WALL: 2-HR RATING
	EXISTING WALL: 4-HR RATING

RATINGS SHOWN FOR THE EXISTING WALLS ARE BASED ON EXISTING DOCUMENTS AND PREVIOUS CODE REQUIREMENTS. THE ARCHITECT DOES NOT VERIFY THE EXISTING RATED WALL SYSTEMS AS CONSTRUCTED. NEW WORK WILL ADHERE TO THE RATED WALLS AS INDICATED.

**DOOR TAG LEGEND**

Tag	Description	Quantity
(XXX)	DOOR # - NO WORK; EXISTING TO REMAIN	6
(XXX) →	DOOR # - PANIC HARDWARE REQUIRED	6
(XXX) KPO	DOOR # - HARDWARE ONLY: KEYED PER OWNER INSTRUCTION	78
(XXX) STR	DOOR # - HARDWARE ONLY: STOREROOM LOCKSET	19
(XXX) OFF	DOOR # - HARDWARE ONLY: OFFICE LOCKSET	16
(XXX) INT	DOOR # - HARDWARE ONLY: CR INTRUDER LOCKSET	39
(XXX) CLR	DOOR # - HARDWARE ONLY: CLASSROOM (CR) LOCKSET	1
(XXX) PRV	DOOR # - HARDWARE ONLY: PRIVACY LOCKSET	23
(XXX) ENT	DOOR # - HARDWARE ONLY: ENTRY LOCKSET	1
(XXX) PAS	DOOR # - HARDWARE ONLY: PASSAGE LOCKSET	2
(XXX)	DOOR # - HARDWARE ONLY: NO LOCKSET	0
(XXX) KPO	DOOR # - REPLACE DOOR: KEYED PER OWNER	61
(XXX) STR	DOOR # - REPLACE DOOR: STOREROOM LOCKSET	2
(XXX) OFF	DOOR # - REPLACE DOOR: OFFICE LOCKSET	1
(XXX)	DOOR # - REPLACE DOOR: NO LOCKSET	8



J.B. EDWARDS ELEMENTARY - KINDERGARTEN ANNEX  
1/16" = 1'





DOOR SCHEDULE - NEW HARDWARE						
Door Number	Door Type	Doors		Hardware Set	Fire Rating	Comments
		Width	Hgt			
001	D	6' - 0"	9' - 0"	1		
002	EXIST'G	3' - 0"	7' - 0"	2		
003	EXIST'G	3' - 0"	7' - 0"	3		
004	EXIST'G	3' - 0"	7' - 0"	5	Exist'g	Rated Vault Door
005	EXIST'G	3' - 0"	7' - 0"	4		
006	EXIST'G	3' - 0"	7' - 0"	6		
007	EXIST'G	3' - 0"	7' - 0"	3		
008	EXIST'G	3' - 0"	7' - 0"	4		
009	EXIST'G	3' - 0"	7' - 0"	7		
010	EXIST'G	3' - 0"	7' - 0"	4		
011	EXIST'G	3' - 0"	7' - 0"	8		
011A	EXIST'G	3' - 0"	7' - 0"	6		
012	EXIST'G	3' - 0"	7' - 0"	5		
013	EXIST'G	3' - 0"	7' - 0"	4		
014	EXIST'G	3' - 0"	7' - 0"	7		
015	EXIST'G	3' - 0"	7' - 0"	4		
016	EXIST'G	2' - 6"	7' - 0"	6		
017	EXIST'G	2' - 6"	7' - 0"	6		
018	EXIST'G	3' - 0"	7' - 0"	4		
019	D	6' - 0"	7' - 0"	9	3/4 HR	
020	B	6' - 0"	7' - 0"	10	1 HR	
021	D	6' - 0"	7' - 0"	10	1 HR	
022	D	6' - 0"	7' - 0"	9	3/4 HR	
023	D	6' - 0"	7' - 0"	12	3/4 HR	
024	D	6' - 0"	7' - 0"	14	3/4 HR	
025	C	3' - 0"	7' - 0"	16A		
026	C	3' - 0"	7' - 0"	16	3/4 HR	
027	EXIST'G	3' - 8"	7' - 0"	17		
028	EXIST'G	3' - 8"	7' - 0"	5		
029	C	3' - 0"	7' - 0"	16	3/4 HR	
030	C	3' - 0"	7' - 0"	16A		
031	D	6' - 0"	7' - 0"	14	3/4 HR	
032	D	6' - 0"	7' - 0"	13	3/4 HR	
033	EXIST'G	3' - 0"	7' - 0"	19		
034	A	3' - 0"	7' - 0"	26	20 min.	
035	EXIST'G	3' - 0"	7' - 0"	5		
036	A	3' - 0"	7' - 0"	26	20 min.	
037	EXIST'G	3' - 0"	7' - 0"	19		
038	EXIST'G	3' - 0"	7' - 0"	5		
038A	EXIST'G	3' - 0"	7' - 0"	5		
038B	EXIST'G	3' - 0"	7' - 0"	5		
039	EXIST'G	3' - 0"	7' - 0"	4		
040	EXIST'G	3' - 0"	7' - 0"	4		
040A	EXIST'G	3' - 0"	7' - 0"	4		
041	EXIST'G	3' - 0"	7' - 0"	4		
42	EXIST'G	3' - 0"	7' - 0"	19		
043	D	6' - 0"	7' - 0"	23	1 HR	
044	EXIST'G	3' - 0"	7' - 0"	3		
045	D	6' - 0"	7' - 0"	23	1 HR	
046	EXIST'G	3' - 0"	7' - 0"	3		
046A	EXIST'G	3' - 0"	7' - 0"	38		
046B	EXIST'G	3' - 0"	7' - 0"	38		
046C	EXIST'G	3' - 0"	7' - 0"	3		
046D	D	6' - 0"	7' - 0"	23A	1-1/2 HR	
046E	EXIST'G	6' - 0"	7' - 0"	29	Exist'g 3hr	
046F	EXIST'G	6' - 0"	7' - 0"	29	Exist'g 3hr	
046G	D	6' - 0"	7' - 0"	23A	1-1/2 HR	
046H	EXIST'G	6' - 0"	7' - 0"	30		
046J	EXIST'G	6' - 0"	7' - 0"	31		
047	A	3' - 0"	7' - 0"	26	20 min.	
048	EXIST'G	6' - 0"	7' - 0"	19	3/4 HR	
049	A	3' - 0"	7' - 0"	26	20 min.	
050	EXIST'G	6' - 0"	7' - 0"	19		
051	B	6' - 0"	7' - 0"	32		
051A	B	6' - 0"	7' - 0"	32		
051B	A	3' - 6"	7' - 0"	33		
051C	EXIST'G	2' - 6"	7' - 0"	5		
051D	EXIST'G	2' - 6"	7' - 0"	34		
051E	EXIST'G	2' - 6"	7' - 0"	6		
051F	EXIST'G	3' - 0"	7' - 0"	4		
051G	B	6' - 0"	7' - 0"	35		
051H	EXIST'G	3' - 0"	7' - 0"	5		
052	A	3' - 0"	7' - 0"	26	20 min.	
053	EXIST'G	6' - 0"	7' - 0"	19	3/4 HR	
054	A	3' - 0"	7' - 0"	26	20 min.	
055	EXIST'G	6' - 0"	7' - 0"	19	3/4 HR	
056	D	6' - 0"	7' - 0"	23	1 HR	
057	EXIST'G	3' - 0"	7' - 0"	4		
058	D	6' - 0"	7' - 0"	23	1 HR	
059	A	3' - 0"	7' - 0"	26	20 min.	
060	EXIST'G	3' - 0"	7' - 0"	5		
061	A	3' - 0"	7' - 0"	26	20 min.	
062	EXIST'G	2' - 8"	7' - 0"	19		
100	D	6' - 0"	7' - 0"	22	1 HR	
101	EXIST'G	3' - 0"	7' - 0"	24		

DOOR SCHEDULE - NEW HARDWARE						
Door Number	Door Type	Doors		Hardware Set	Fire Rating	Comments
		Width	Hgt			
101A	C	3' - 0"	7' - 0"	11		
101B	EXIST'G	2' - 6"	7' - 0"	25		
102	EXIST'G	3' - 0"	7' - 0"	24		
102A	C	3' - 0"	7' - 0"	11		
102B	EXIST'G	2' - 6"	7' - 0"	25		
103	EXIST'G	3' - 0"	7' - 0"	24		
103A	C	3' - 0"	7' - 0"	11		
103B	EXIST'G	2' - 6"	7' - 0"	25		
104	EXIST'G	3' - 0"	7' - 0"	24		
104A	C	3' - 0"	7' - 0"	11		
104B	EXIST'G	2' - 6"	7' - 0"	25		
105	EXIST'G	3' - 0"	7' - 0"	24		
105A	C	3' - 0"	7' - 0"	11		
105B	EXIST'G	2' - 6"	7' - 0"	25		
106	EXIST'G	3' - 0"	7' - 0"	24		
106A	C	3' - 0"	7' - 0"	11		
106B	EXIST'G	2' - 6"	7' - 0"	25		
107	EXIST'G	3' - 0"	7' - 0"	24		Exist'g Alum. Frame
107A	C	3' - 0"	7' - 0"	18	3/4 HR	
107B	EXIST'G	2' - 6"	7' - 0"	25		
108	EXIST'G	3' - 0"	7' - 0"	4		
109	EXIST'G	3' - 0"	7' - 0"	6		
110	EXIST'G	3' - 0"	7' - 0"	3		
111	EXIST'G	3' - 0"	7' - 0"	5		
112	EXIST'G	3' - 0"	7' - 0"	5		
200	D	6' - 0"	7' - 0"	23	1 HR	
201	EXIST'G	3' - 0"	7' - 0"	24		Exist'g Wood Frame
201A	C	3' - 0"	7' - 0"	11		
201B	EXIST'G	2' - 6"	7' - 0"	25		
202	EXIST'G	3' - 0"	7' - 0"	24		Exist'g Alum. Frame
202A	C	3' - 0"	7' - 0"	11		
202B	EXIST'G	2' - 6"	7' - 0"	25		
203	EXIST'G	3' - 0"	7' - 0"	24		
203A	C	3' - 0"	7' - 0"	11		
203B	EXIST'G	2' - 6"	7' - 0"	25		
204	EXIST'G	3' - 0"	7' - 0"	24		
204A	C	3' - 0"	7' - 0"	11		
204B	EXIST'G	2' - 6"	7' - 0"	25		
205	EXIST'G	3' - 0"	7' - 0"	24		
205A	C	3' - 0"	7' - 0"	11		
205B	EXIST'G	2' - 6"	7' - 0"	25		
206	EXIST'G	3' - 0"	7' - 0"	24		
206A	C	3' - 0"	7' - 0"	11		
206B	EXIST'G	2' - 6"	7' - 0"	25		
207	EXIST'G	3' - 0"	7' - 0"	24		
207A	C	3' - 0"	7' - 0"	27	3/4 HR	
207B	EXIST'G	2' - 6"	7' - 0"	25		
208	EXIST'G	3' - 0"	7' - 0"	4		
209	EXIST'G	3' - 0"	7' - 0"	6		
210	EXIST'G	3' - 0"	7' - 0"	3		
211	EXIST'G	3' - 0"	7' - 0"	5		
212	EXIST'G	3' - 0"	7' - 0"	5		
300	D	6' - 0"	7' - 0"	23	1 HR	
301	EXIST'G	3' - 0"	7' - 0"	24		
301A	C	3' - 0"	7' - 0"	11		
302	EXIST'G	3' - 0"	7' - 0"	24		
302A	C	3' - 0"	7' - 0"	11		
303	EXIST'G	3' - 0"	7' - 0"	24		
303A	C	3' - 0"	7' - 0"	11		
304	EXIST'G	3' - 0"	7' - 0"	24		
304A	C	3' - 0"	7' - 0"	11		
305	EXIST'G	3' - 0"	7' - 0"	24		
305A	C	3' - 0"	7' - 0"	27	3/4 HR	
306	EXIST'G	3' - 0"	7' - 0"	24		Exist'g Alum. Frame
306A	C	3' - 0"	7' - 0"	27	3/4 HR	
307	EXIST'G	3' - 0"	7' - 0"	24		Exist'g Alum. Frame
307A	C	3' - 0"	7' - 0"	27	3/4 HR	
308	EXIST'G	3' - 0"	7' - 0"	4		
309	EXIST'G	3' - 0"	7' - 0"	6		
310	EXIST'G	3' - 0"	7' - 0"	3		
311	EXIST'G	3' - 0"	7' - 0"	5		
312	EXIST'G	3' - 0"	7' - 0"	5		
400	D	6' - 0"	7' - 0"	23	1 HR	
401	EXIST'G	3' - 0"	7' - 0"	24		Exist'g Alum. Frame
401A	C	3' - 0"	7' - 0"	11		
402	EXIST'G	3' - 0"	7' - 0"	24		Exist'g Alum. Frame
402A	C	3' - 0"	7' - 0"	11		
403	EXIST'G	3' - 0"	7' - 0"	24		Exist'g Alum. Frame
403A	C	3' - 0"	7' - 0"	11		
404	EXIST'G	3' - 0"	7' - 0"	24		Exist'g Alum. Frame
404A	C	3' - 0"	7' - 0"	11		
405	EXIST'G	3' - 0"	7' - 0"	24		
405A	C	3' - 0"	7' - 0"	27	3/4 HR	
406	EXIST'G	3' - 0"	7' - 0"	24		
406A	C	3' - 0"	7' - 0"	27	3/4 HR	
407	EXIST'G	3' - 0"	7' - 0"	24		

DOOR SCHEDULE - NEW HARDWARE						
Door Number	Door Type	Doors		Hardware Set	Fire Rating	Comments
		Width	Hgt			
407A	C	3' - 0"	7' - 0"	27	3/4 HR	
408	EXIST'G	3' - 0"	7' - 0"	4		
409	EXIST'G	3' - 0"	7' - 0"	6		
410	EXIST'G	3' - 0"	7' - 0"	3		
411	EXIST'G	3' - 0"	7' - 0"	5		
412	EXIST'G	3' - 0"	7' - 0"	5		
700	EXIST'G	6' - 0"	7' - 0"	28	3/4 HR	
701	EXIST'G	3' - 0"	7' - 0"	20	Exist'g 20 min.	
701A	EXIST'G	3' - 0"	7' - 0"	20	Exist'g 20 min.	
702	EXIST'G	3' - 0"	7' - 0"	20	Exist'g 20 min.	
702A	EXIST'G	3' - 0"	7' - 0"	20	Exist'g 20 min.	
703	EXIST'G	3' - 0"	7' - 0"	20	Exist'g 20 min.	
703A	C	3' - 0"	7' - 0"	15		
704	EXIST'G	3' - 0"	7' - 0"	19	Exist'g 20 min.	
705	EXIST'G	3' - 0"	7' - 0"	19	Exist'g 20 min.	
706	EXIST'G	3' - 0"	7' - 0"	20	Exist'g 20 min.	
706A	C	3' - 0"	7' - 0"	15		
707	EXIST'G	3' - 0"	7' - 0"	20	Exist'g 20 min.	
707A	C	3' - 0"	7' - 0"	15		
708	EXIST'G	3' - 0"	7' - 0"	20	Exist'g 20 min.	
708A	C	3' - 0"	7' - 0"	15		
709	EXIST'G	3' - 0"	7' - 0"	20	Exist'g 20 min.	
709A	C	3' - 0"	7' - 0"	15		
710	EXIST'G	3' - 0"	7' - 0"	19	Exist'g 20 min.	
711	EXIST'G	3' - 0"	7' - 0"	19	Exist'g 20 min.	
712	EXIST'G	3' - 0"	7' - 0"	20	Exist'g 20 min.	
800	EXIST'G	6' - 0"	7' - 0"	28	3/4 HR	
801	EXIST'G	3' - 0"	7' - 0"	20	Exist'g 20 min.	
802	EXIST'G	3' - 0"	7' - 0"	19	Exist'g 20 min.	
804	EXIST'G	3' - 0"	7' - 0"	20	Exist'g 20 min.	
804A	C	3' - 0"	7' - 0"	15		
804B	EXIST'G	3' - 0"	7' - 0"	19		
805	EXIST'G	3' - 0"	7' - 0"	20	Exist'g 20 min.	
805A	C	3' - 0"	7' - 0"	15		
805B	EXIST'G	3' - 0"	7' - 0"	19		
805C	EXIST'G	3' - 0"	7' - 0"	19		
809	EXIST'G	3' - 0"	7' - 0"	20	Exist'g 20 min.	
80						